



HSK (DIN 69893)



2019 Catalog

World-class products

Precise quality

Satisfied customer

ZERTIFIKAT ♦ CERTIFICATE ♦ 認証証書 ♦ CERTIFICADO ♦ CERTIFICAT



CERTIFICATE

The Certification Body
of TÜV SÜD South Asia Private Limited
certifies that



Falcon Toolings
SF No -205/1 & 2, Kuttai Thottam, Kalapatti post
Coimbatore- 641048, Tamil Nadu, INDIA

has implemented a Quality Management System
in accordance with ISO 9001:2015
For Scope of

Design, Development, Manufacturing & Supply of Toolings

The certificate is valid in conjunction
with the main-certificate from 2018-01-20 until 2021-01-19
Subject to successful completion of annual periodic audits
The present status of this Certificate can be obtained on www.tuv.sud.in
Further clarifications regarding the scope of this certificate may be obtained by consulting the certification body

Certificate Registration No. **99 100 10587/01**

Date of Initial certification : 2015-01-20

Certification Body
of TÜV SÜD South Asia Private Limited, Mumbai
Member of TÜV SÜD Group



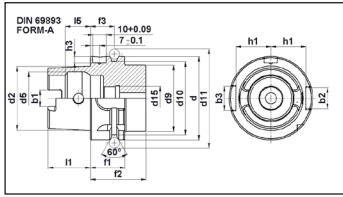
Table of contents

Description	Page	Description	Page
SHK DETAIL - Shank Detail		CMH - Combi Shell Mill Holder	
Machine Design	4	HSK A50	15
HSK Form A	4	HSK A50 – Standard GPL	15
HSK Form B	4	HSK A63	15
HSK Form C	4	HSK A63 – Standard GPL	15
HSK Form E	4	HSK A100	15
HSK Form F	5	HSK A100 – Standard GPL	15
ERS - ER Collet Chuck		Spares	16
HSK A50	6	Drive Ring	16
HSK A50 – Standard GPL	6	Parallel Key	16
HSK A63	6	Cutter Clamping Screw	16
HSK A63 – Standard GPL	6	Accessories	17
HSK A63 – GPL =160 mm	6	FMH - Flange Face Mill Arbor	
HSK A100	7	HSK A100	18
HSK A100 – Standard GPL	7	Spares	18
HSK A100 – GPL =160 mm	7	Driving Key	18
Spares	7	Accessories	18
Stopper Screw	7	SFC - Shrink Fit Holder	
Accessories	8	HSK A50	19
EMH - End Mill Holder (DIN 1835 - B)		HSK A50 – Standard GPL	19
HSK A50	9	HSK A63	19
HSK A50 – Standard GPL	9	HSK A63 – Standard GPL	19
HSK A63	9	HSK A100	20
HSK A63 – Standard GPL	9	HSK A100 – Standard GPL	20
HSK A63 – GPL =160 mm	10	Spares	20
HSK A100	10	Accessories	20
HSK A100 – Standard GPL	10	MTA - Morse Taper Adaptor	
HSK A100 – GPL =100 mm	10	HSK – Form AD – G6.3	21
HSK A100 – GPL =160 mm	11	HSK A50	21
Spares	11	HSK A63	21
Grub Screw	11	HSK A100	21
Accessories	11	Accessories	22
SLA - Side Lock Holder		BLA - Boring Blank Adaptor	
HSK A50	12	HSK A63 – Form A	23
HSK A63	12	HSK A100 – Form A	23
Spares	12	Accessories	23
Grub Screw	12	SMS - Face Mill Arbor	
Accessories	12	HSK A50 – Standard GPL	13
SMS - Face Mill Arbor		HSK A63 – Standard GPL	13
HSK A50 – Standard GPL	13	HSK A100 – Standard GPL	13
HSK A63 – Standard GPL	13	Spares	14
HSK A100 – Standard GPL	13	Cutter Clamping Screw	14
Spares	14	Driving Key	14
Cutter Clamping Screw	14	Accessories	14
Driving Key	14		
Accessories	14		

HSK (DIN 69893)

Machine Design

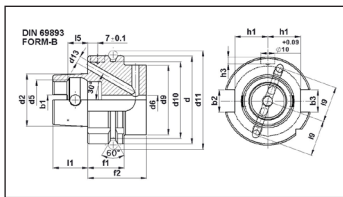
HSK Form A



Standard type for use on milling machines and machining centres with automatic tool change. Also suitable for manual tool change.

HSK - d	b1 ±0.04	b2 H10	b3 H10	d2.	d5	d9 max	d10 -0.1	d11 -0.1	d15	f1 -0.1	f2 min	f3 ±0.1	h1 -0.2	h3 +0.2	l1 -0.2	I5 JS10
50	10.54	12	14	38.009	29	40	43	59.30	M16X1	26	42	18	21.0	5.1	25	14.13
63	12.54	16	18	48.010	37	50	55	72.30	M18X1	26	42	18	26.5	5.0	32	18.13
100	20.02	20	22	75.013	58	80	92	109.75	M24X1.5	29	45	20	44.0	4.9	50	28.56

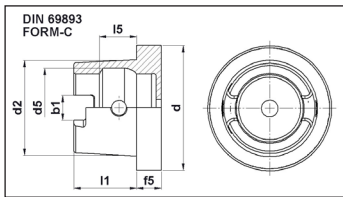
HSK Form B



Coolant supply through the flange
Enlarged flange diameter for rigidity
Drive slots are in the flange
For use on milling machines and lathes
Machining centres with automatic tool change

HSK - d	b1 ±0.04	b2 H10	b3 H10	d2.	d5	d9 max	d10 -0.1	d11 -0.1	d13	d6 max	f1 -0.1	f2 min	f3 ±0.1	h1 -0.2	h3 +0.2	l1 -0.2	I5 JS10	I9 -0.2
63	10.54	16	18	38.009	29	53	55	72.30	25	6.8	26	42	18	25.0	5.0	25	14.13	25
80	12.54	18	20	48.010	37	68	70	88.80	32	8.4	26	42	18	31.5	4.9	32	18.13	32
125	20.02	25	28	75.013	58	111	117	134.75	50	12	29	45	20	50.0	4.8	50	28.56	50

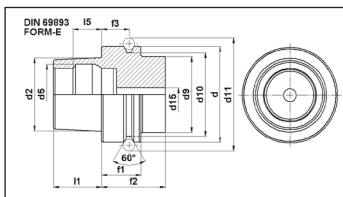
HSK Form C



Manual tool change type only
For use as a modular system
For special purpose machines
For transfer lines and lathes.

HSK - d	b1 ±0.04	d2.	d5	l1 -0.2	I5 JS10	f5
63	12.54	48.010	37	32	18.13	12.5
50	10.54	38.009	29	25	14.13	12.5
100	20.02	75.013	58	50	28.56	16

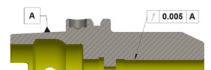
HSK Form E



High speed applications for automatic tool change.
Option coolant fitting as form 'A'
Note: No rear drive slots, no slots or notches in the flange.

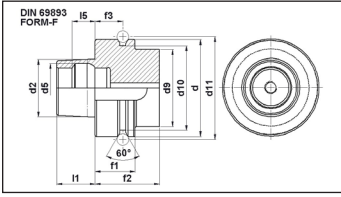
HSK - d	d2.	d5 H11	d9 max	d10 -0.1	d11 -0.1	d15 max	f1 -0.1	f2 min	f3 ±0.1	l1 -0.2	I5 JS10
50	38.009	29	40	43	59.30	6.8	26	42	18	25	14.13
63	48.010	37	50	55	72.30	8.4	26	42	18	32	18.13

Pre balanced G6.3@20000 RPM
Fine balancing G2.5@25000 RPM on request



HSK (DIN 69893)

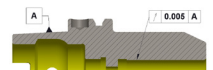
HSK Form F



High speed applications
 Enlarged flange diameter for rigidity
 No drive slots
 Symmetrical design
 For use on machines with automatic
 tool change

HSK - d	d2	d5	d9 max	d10 -0.1	d11 -0.1	f1 -0.1	f2 min	f3 ±0.1	l1 -0.2	l5 JS10
63	38.009	29	50	55	72.30	26	42	18	25	14.13

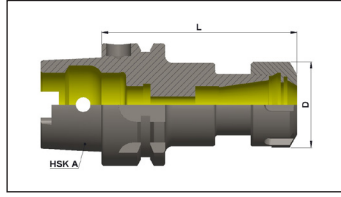
Pre balanced G6.3@20000 RPM
 Fine balancing G2.5@25000 RPM on request



HSK (DIN 69893)

HSK A50

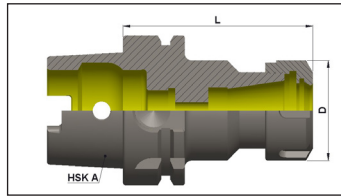
HSK A50 – Standard GPL



Part No.	Product name	Taper	Size	L	Clamping range	D	G	Nut	Kgs	Group
F1A050A-ERS16080	HSK A50 ER 16 080	A50	ER16	80	1-10	28	-	F15500-16ERH	0.6	B
F1A050A-ERS20080	HSK A50 ER 20 080	A50	ER20	80	1-13	35	-	F15500-20ERS	0.6	B
F1A050A-ERS25080	HSK A50 ER 25 080	A50	ER25	80	1-16	42	-	F15500-25ERS	0.6	B
F1A050A-ERS32080	HSK A50 ER 32 080	A50	ER32	80	2-20	50	-	F15500-32ERS	0.6	B

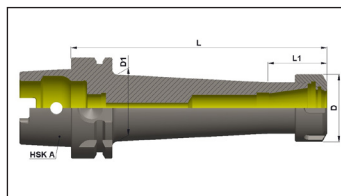
HSK A63

HSK A63 – Standard GPL



Part No.	Product name	Taper	Size	L	Clamping range	D	G	Nut	Kgs	Group
F1A063A-ERS16080	HSK A63 ER 16 080	A63	ER16	80	1-10	28	-	F15500-16ERH	0.8	B
F1A063A-ERS20080	HSK A63 ER 20 080	A63	ER20	80	1-13	35	-	F15500-20ERS	0.8	B
F1A063A-ERS25080	HSK A63 ER 25 080	A63	ER25	80	1-16	42	-	F15500-25ERS	0.9	B
F1A063A-ERS32080	HSK A63 ER 32 080	A63	ER32	80	2-20	50	-	F15500-32ERS	1	B
F1A063A-ERS40100	HSK A63 ER 40 100	A63	ER40	100	3-26	63	-	F15500-40ERS	1.2	B

HSK A63 – GPL =160 mm



Part No.	Product name	Taper	Size	L	Clamping range	D	D1	L1	G	Nut	Kgs	Group
F1A063A-ERS16160	HSK A63 ER 16 160	A63	ER16	160	1-10	28	-	-	SCW7/16	F15500-16ERH	1.3	B
F1A063A-ERS20160	HSK A63 ER 20 160	A63	ER20	160	1-13	35	35	32.5	M14X1.5	F15500-20ERS	1.5	B
F1A063A-ERS25160	HSK A63 ER 25 160	A63	ER25	160	1-16	42	42	32	M18X1.5	F15500-25ERS	1.6	B
F1A063A-ERS32160	HSK A63 ER 32 160	A63	ER32	160	2-20	50	50	34.5	M22X1.5	F15500-32ERS	1.9	B
F1A063A-ERS40160	HSK A63 ER 40 160	A63	ER40	160	3-26	63	-	-	M28X1.5	F15500-40ERS	2.1	B

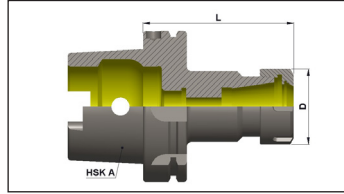
Pre balanced G6.3@20000 RPM
 Fine balancing G2.5@25000 RPM on request



HSK (DIN 69893)

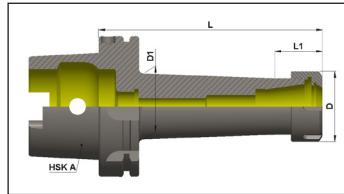
HSK A100

HSK A100 – Standard GPL



Part No.	Product name	Taper	Size	L	Clamping range	D	G	Nut	Kgs	Group
F1A100A-ERS16100	HSK A100 ER 16 100	A100	ER16	100	1-10	28	SCW7/16	F15500-16ERH	2.2	B
F1A100A-ERS20100	HSK A100 ER 20 100	A100	ER20	100	1-13	35	M14X1.5	F15500-20ERS	2.4	B
F1A100A-ERS25100	HSK A100 ER 25 100	A100	ER25	100	1-16	42	M12	F15500-25ERS	2.5	B
F1A100A-ERS32100	HSK A100 ER 32 100	A100	ER32	100	2-20	50	M12	F15500-32ERS	2.7	B
F1A100A-ERS40100	HSK A100 ER 40 100	A100	ER40	100	3-26	63	-	F15500-40ERS	2.8	B
F1A100A-ERS50120	HSK A100 ER 50 120	A100	ER50	120	10-34	78	-	F15500-50ERS	3.3	B

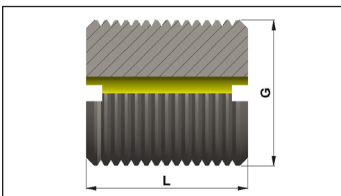
HSK A100 – GPL =160 mm



Part No.	Product name	Taper	Size	L	Clamping range	D	D1	L1	G	Nut	Kgs	Group
F1A100A-ERS16160	HSK A100 ER 16 160	A100	ER16	160	1-10	28	-	-	SCW7/16	F15500-16ERH	2.6	B
F1A100A-ERS20160	HSK A100 ER 20 160	A100	ER20	160	1-13	35	35	33.5	M12	F15500-20ERS	2.8	B
F1A100A-ERS25160	HSK A100 ER 25 160	A100	ER25	160	1-16	42	42	32	M18X1.5	F15500-25ERS	3	B
F1A100A-ERS32160	HSK A100 ER 32 160	A100	ER32	160	2-20	50	47	35	M22X1.5	F15500-32ERS	3.2	B
F1A100A-ERS40160	HSK A100 ER 40 160	A100	ER40	160	3-26	63	63	45	M28X1.5	F15500-40ERS	3.9	B

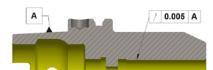
Spares

Stopper Screw



Part No.	L	G
F1SCWA-20U11	20	7/16
F1SCWM-20M06	20	M6
F1SCWM-20M14	20	M14
F1SCWM-20M18	20	M18
F1SCWM-20M22	20	M22
F1SCWM-20M28	20	M28

Pre balanced G6.3@20000 RPM
 Fine balancing G2.5@25000 RPM on request



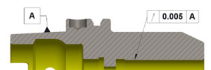
HSK (DIN 69893)

Accessories



For Further Details Please Refer Accessories Catalog.

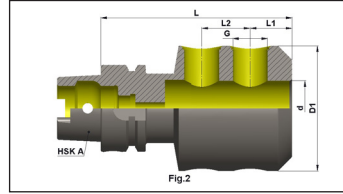
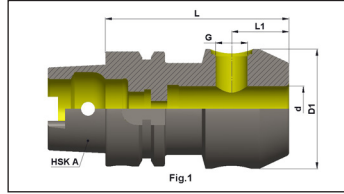
Pre balanced G6.3@20000 RPM
Fine balancing G2.5@25000 RPM on request



HSK (DIN 69893)

HSK A50

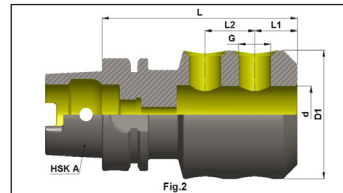
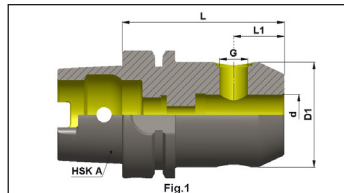
HSK A50 – Standard GPL



Part No.	Product name	Taper	d.	L	D1	G	L1	L2	FIG	Kgs	Group
F1A050A-EMH06065	HSK A50 EM 06 065	A50	6	65	25	M6	18	-	1	0.5	B
F1A050A-EMH08065	HSK A50 EM 08 065	A50	8	65	28	M8	18	-	1	0.6	B
F1A050A-EMH10065	HSK A50 EM 10 065	A50	10	65	35	M10	20	-	1	0.6	B
F1A050A-EMH12080	HSK A50 EM 12 080	A50	12	80	42	M12	22.5	-	1	1	B
F1A050A-EMH16080	HSK A50 EM 16 080	A50	16	80	48	M14	24	-	1	1	B
F1A050A-EMH20080	HSK A50 EM 20 080	A50	20	80	52	M16	25	-	1	1	B
F1A050A-EMH25110	HSK A50 EM 25 110	A50	25	110	65	M18X2	24	25	2	1.8	B
F1A050A-EMH32110	HSK A50 EM 32 110	A50	32	110	72	M20X2	24	28	2	1.9	B

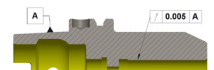
HSK A63

HSK A63 – Standard GPL



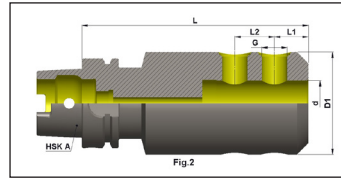
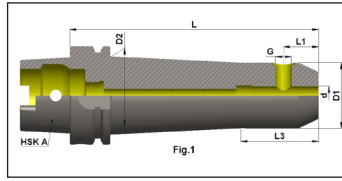
Part No.	Product name	Taper	d.	L	D1	G	L1	L2	FIG	Kgs	Group
F1A063A-EMH06065	HSK A63 EM 06 065	A63	6	65	25	M6	18	-	1	0.8	B
F1A063A-EMH08065	HSK A63 EM 08 065	A63	8	65	28	M8	18	-	1	0.8	B
F1A063A-EMH10065	HSK A63 EM 10 065	A63	10	65	35	M10	20	-	1	0.9	B
F1A063A-EMH12080	HSK A63 EM 12 080	A63	12	80	42	M12	22.5	-	1	1.2	B
F1A063A-EMH16080	HSK A63 EM 16 080	A63	16	80	48	M14	24	-	1	1.3	B
F1A063A-EMH20080	HSK A63 EM 20 080	A63	20	80	52	M16	25	-	1	1.3	B
F1A063A-EMH25110	HSK A63 EM 25 110	A63	25	110	65	M18X2	24	25	2	2.3	B
F1A063A-EMH32110	HSK A63 EM 32 110	A63	32	110	72	M20X2	24	28	2	2.5	B
F1A063A-EMH40120	HSK A63 EM 40 120	A63	40	120	80	M20X2	30	32	2	4.2	B

Pre balanced G6.3@20000 RPM
 Fine balancing G2.5@25000 RPM on request



HSK (DIN 69893)

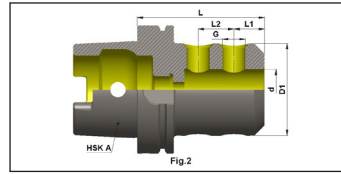
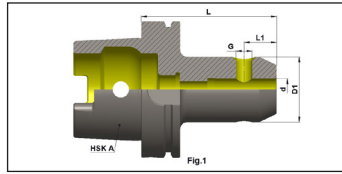
HSK A63 – GPL =160 mm



Part No.	Product name	Taper	d.	L	D1	D2	G	L1	L2	L3	FIG	Kgs	Group
F1A063A-EMH08160	HSK A63 EM 08 160	A63	8	160	28	38	M8	18	-	32	1	1.2	B
F1A063A-EMH10160	HSK A63 EM 10 160	A63	10	160	35	40	M10	20	-	35	1	1.2	B
F1A063A-EMH12160	HSK A63 EM 12 160	A63	12	160	42	-	M12	22.5	-	-	1	2	B
F1A063A-EMH16160	HSKA 63 EM 16 160	A63	16	160	48	-	M14	24	-	-	1	2.4	B
F1A063A-EMH20160	HSK A63 EM 20 160	A63	20	160	52	-	M16	25	-	-	1	1.7	B
F1A063A-EMH25160	HSKA 63 EM 25 160	A63	25	160	65	-	M18X2	24	25	-	2	3.3	B

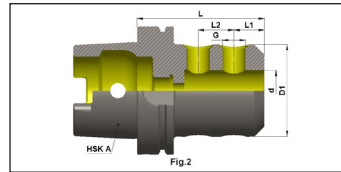
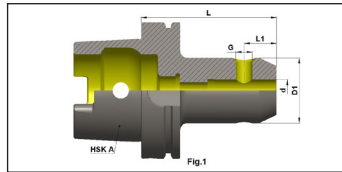
HSK A100

HSK A100 – Standard GPL



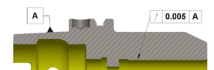
Part No.	Product name	Taper	d.	L	D1	G	L1	L2	Kgs	Group
F1A100A-EMH06080	HSK A100 EM 06 080	A100	6	80	25	M6	18	-	2.1	B
F1A100A-EMH08080	HSK A100 EM 08 080	A100	8	80	28	M8	18	-	2.2	B
F1A100A-EMH10080	HSK A100 EM 10 080	A100	10	80	35	M10	20	-	2.2	B
F1A100A-EMH12080	HSK A100 EM 12 080	A100	12	80	42	M12	22.5	-	2.3	B

HSK A100 – GPL =100 mm



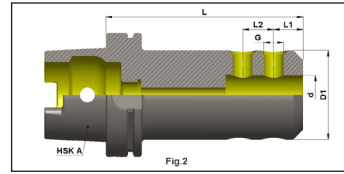
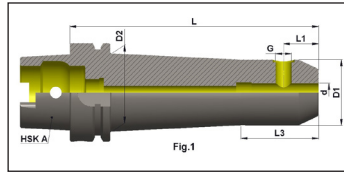
Part No.	Product name	Taper	d.	L	D1	G	L1	L2	Kgs	Group
F1A100A-EMH16100	HSK A100 EM 16 100	A100	16	100	48	M14	24	-	2.8	B
F1A100A-EMH20100	HSK A100 EM 20 100	A100	20	100	52	M16	25	-	3.1	B
F1A100A-EMH25100	HSK A100 EM 25 100	A100	25	100	65	M18X2	24	25	3.5	B
F1A100A-EMH32100	HSK A100 EM 32 100	A100	32	100	72	M20X2	24	28	3.8	B
F1A100A-EMH40120	HSK A100 EM 40 120	A100	40	120	90	M20X2	30	32	5.4	B
F1A100A-EMH50130	HSK A100 EM 50 130	A100	50	130	100	M24X2	35	35	6.2	B

Pre balanced G6.3@20000 RPM
 Fine balancing G2.5@25000 RPM on request



HSK (DIN 69893)

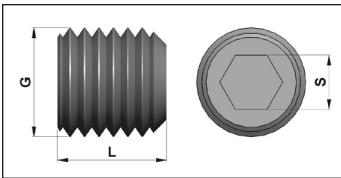
HSK A100 – GPL =160 mm



Part No.	Product name	Taper	d.	L	D1	G	L1	L2	Kgs	Group	D2	L3	FIG
F1A100A-EMH08160	HSK A100 EM 08 160	A100	8	160	28	M8	18	-	2.8	B	38	32	1
F1A100A-EMH10160	HSK A100 EM 10 160	A100	10	160	35	M10	20	-	2.8	B	42	35	1
F1A100A-EMH12160	HSK A100 EM 12 160	A100	12	160	42	M12	22.5	-	2.6	B	48	35	1
F1A100A-EMH16160	HSK A100 EM 16 160	A100	16	160	48	M14	24	-	2.8	B	54	40	1
F1A100A-EMH20160	HSK A100 EM 20 160	A100	20	160	52	M16	25	-	3	B	-	-	2
F1A100A-EMH25160	HSK A100 EM 25 160	A100	25	160	65	M18X2	24	25	5	B	-	-	2
F1A100A-EMH32160	HSK A100 EM 32 160	A100	32	160	72	M20X2	24	28	5.6	B	-	-	2
F1A100A-EMH40160	HSK A100 EM 40 160	A100	40	160	90	M20X2	30	32	6.3	B	-	-	2

Spares

Grub Screw



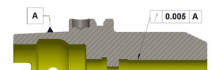
Part No.	G	L	S
F1GSWD-10M06	M6	10	3
F1GSWD-10M08	M8	10	4
F1GSWD-12M10	M10	12	5
F1GSWD-16M12	M12	16	6
F1GSWD-16M14	M14	16	6
F1GSWD-16M16	M16	16	8
F1GSWD-20M18	M18	20	10
F1GSWD-20M20	M20	20	10
F1GSWD-25M24	M24	25	12

Accessories



For Further Details Please Refer Accessories Catalog.

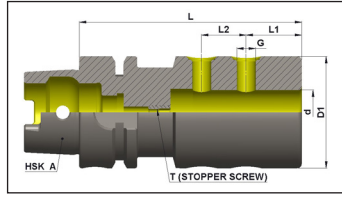
Pre balanced G6.3@20000 RPM
 Fine balancing G2.5@25000 RPM on request



HSK (DIN 69893)

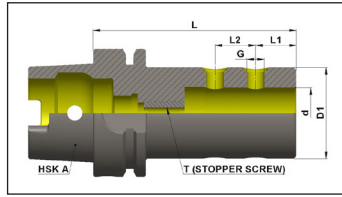
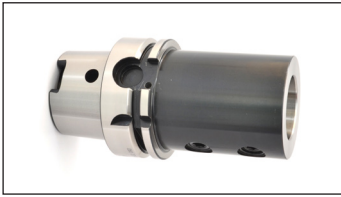
SLA Side Lock Holder

HSK A50



Part No.	Product name	Taper	d.	L	L1	L2	D1	G	T	Kgs	Group
F1A050A-SLA20100	HSK A50 SLA 20 100	A50	20	100	25	20	50	M10	M12	1.4	B
F1A050A-SLA25110	HSK A50 SLA 25 110	A50	25	110	25	20	50	M10	M12	1.4	B
F1A050A-SLA32110	HSK A50 SLA 32 110	A50	32	110	30	20	60	M10	M12	1.8	B

HSK A63



Part No.	Product name	Taper	d.	L	L1	L2	D1	G	T	Kgs	Group
F1A063A-SLA25110	HSK A63 SLA 25 110	A63	25	110	25	20	50	M10	M12	1.8	B
F1A063A-SLA32110	HSK A63 SLA 32 110	A63	32	110	30	20	60	M10	M12	2	B
F1A063A-SLA40125	HSK A63 SLA 40 125	A63	40	125	30	20	63	M12	M12	2.4	B

Spares

Grub Screw

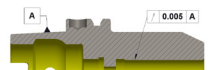
Part No.	G	L	S
F1GSWD-10M06	M6	10	3
F1GSWD-10M08	M8	10	4
F1GSWD-12M10	M10	12	5
F1GSWD-16M12	M12	16	6
F1GSWD-16M14	M14	16	6
F1GSWD-16M16	M16	16	8
F1GSWD-20M18	M18	20	10
F1GSWD-20M20	M20	20	10
F1GSWD-25M24	M24	25	12

Accessories



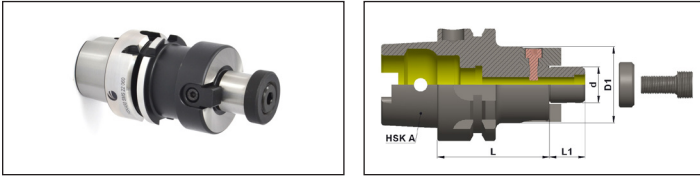
For Further Details Please Refer Accessories Catalog.

Pre balanced G6.3@20000 RPM
 Fine balancing G2.5@25000 RPM on request



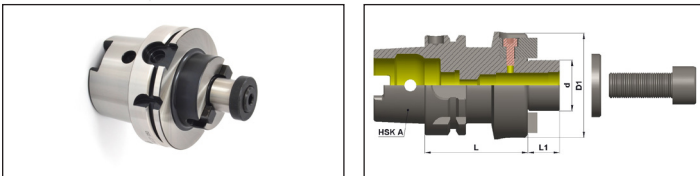
HSK (DIN 69893)

HSK A50 – Standard GPL



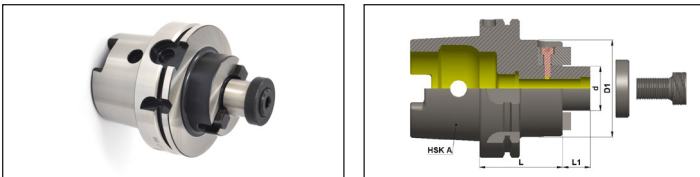
Part No.	Product name	Taper	d.	L	L1	D1	Cutter Dia	Kgs	Group
F1A050A-SMS16050	HSK A50 SMS 16 050	A50	16	50	17	34	40	0.6	B
F1A050A-SMS22060	HSK A50 SMS 22 060	A50	22	60	19	48	50 & 63	0.9	B
F1A050A-SMS27060	HSK A50 SMS 27 060	A50	27	60	21	60	80	1	B

HSK A63 – Standard GPL



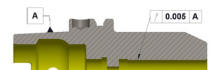
Part No.	Product name	Taper	d.	L	L1	D1	Cutter Dia	Kgs	Group
F1A063A-SMS16050	HSK A63 SMS 16 050	A63	16	50	17	34	40	0.9	B
F1A063A-SMS22050	HSK A63 SMS 22 050	A63	22	50	19	48	50 & 63	1.2	B
F1A063A-SMS27060	HSK A63 SMS 27 060	A63	27	60	21	60	80	1.4	B
F1A063A-SMS32065	HSK A63 SMS 32 065	A63	32	65	24	70	100	1.6	B
F1A063A-SMS40065	HSK A63 SMS 40 065	A63	40	65	27	80	125	2	B

HSK A100 – Standard GPL



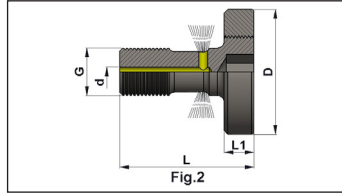
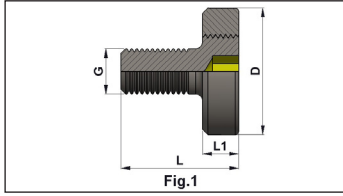
Part No.	Product name	Taper	d.	L	L1	D1	Cutter Dia	Kgs	Group
F1A100A-SMS16050	HSK A100 SMS 16 050	A100	16	50	17	34	40	2.2	B
F1A100A-SMS22050	HSK A100 SMS 22 050	A100	22	50	19	48	50 & 63	2.4	B
F1A100A-SMS27050	HSK A100 SMS 27 050	A100	27	50	21	60	80	2.5	B
F1A100A-SMS32060	HSK A100 SMS 32 060	A100	32	60	24	70	100	3	B
F1A100A-SMS40060	HSK A100 SMS 40 060	A100	40	60	27	80	125	3.4	B

Pre balanced G6.3@20000 RPM
 Fine balancing G2.5@25000 RPM on request



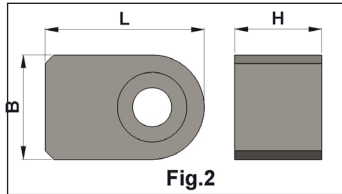
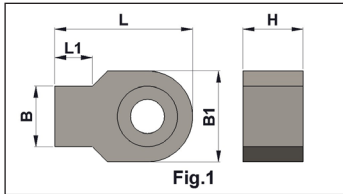
Spares

Cutter Clamping Screw



Part No.	D	L	L1	G	d.	Allen Key	FIG	Remarks
F1CCSN-22M10	28	26	8	M10	-	6mm	1	NORMAL
F1CCSN-16M08	20	23	7	M8	-	5mm	1	NORMAL
F1CCSN-27M12	35	31	9	M12	-	8mm	1	NORMAL
F1CCSN-32M16	42	36	10	M16	-	10mm	1	NORMAL
F1CCSN-40M20	52	41	11	M20	-	12mm	1	NORMAL
F1CCSN-60M30	75	60	15	M30	-	17mm	1	NORMAL
F1CCSN-50M24	75	49	13	M24	-	14mm	1	NORMAL
F1CCST-22M10	28	33	8	M10	3.2	6mm	2	THRU COOLANT
F1CCST-16M08	20	32	7	M8	2.5	5mm	2	THRU COOLANT
F1CCST-27M12	35	44	9	M12	3.2	8mm	2	THRU COOLANT
F1CCST-32M16	42	45	10	M16	3.2	10mm	2	THRU COOLANT
F1CCST-40M20	52	51	11	M20	3.2	12mm	2	THRU COOLANT

Driving Key



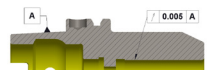
Part No.	Product name	B	b1	L	L1	H	Allen Screw	FIG
F1DRKY-08S16	DRIVING KEY 08 16	8	12	17.5	5	8	M4	1
F1DRKY-10S22	DRIVING KEY 10 22	10	12	18.3	7.5	10	M4	1
F1DRKY-12S27	DRIVING KEY 12 27	12	-	18.3	-	10	M4	2
F1DRKY-14S32	DRIVING KEY 14 32	14	-	24	-	13	M5	2
F1DRKY-16S40	DRIVING KEY 16 40	16	-	24	-	16	M6	2

Accessories



For Further Details Please Refer Accessories Catalog.

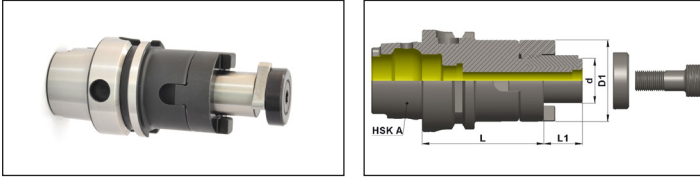
Pre balanced G6.3@20000 RPM
Fine balancing G2.5@25000 RPM on request



HSK (DIN 69893)

HSK A50

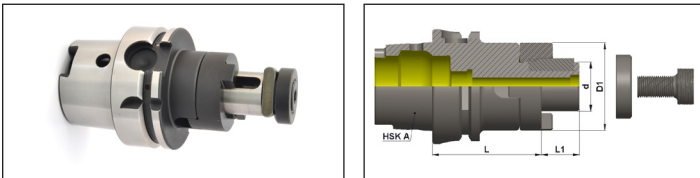
HSK A50 – Standard GPL



Part No.	Product name	Taper	d.	L	L1	D1	Kgs	Group
F1A050A-CMH16050	HSK A50 CMH 16 050	A50	16	50	17	32	0.49	B
F1A050A-CMH22050	HSK A50 CMH 22 050	A50	22	50	19	40	0.6	B
F1A050A-CMH27065	HSK A50 CMH 27 065	A50	27	65	21	48	0.8	B
F1A050A-CMH32065	HSK A50 CMH 32 065	A50	32	65	24	58	0.88	B

HSK A63

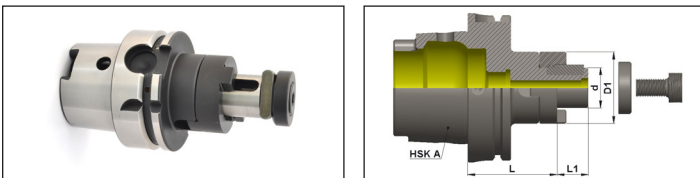
HSK A63 – Standard GPL



Part No.	Product name	Taper	d.	L	L1	D1	Kgs	Group
F1A063A-CMH16060	HSK A63 CMH 16 060	A63	16	60	17	32	0.82	B
F1A063A-CMH22060	HSK A63 CMH 22 060	A63	22	60	19	40	0.91	B
F1A063A-CMH27060	HSK A63 CMH 27 060	A63	27	60	21	48	1	B
F1A063A-CMH32060	HSK A63 CMH 32 060	A63	32	60	24	58	1.13	B
F1A063A-CMH40070	HSK A63 CMH 40 070	A63	40	70	27	70	1.5	B

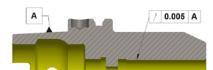
HSK A100

HSK A100 – Standard GPL



Part No.	Product name	Taper	d.	L	L1	D1	Kgs	Group
F1A100A-CMH16060	HSK A100 CMH 16 060	A100	16	60	17	32	2.17	B
F1A100A-CMH22060	HSK A100 CMH 22 060	A100	22	60	19	40	2.24	B
F1A100A-CMH27060	HSK A100 CMH 27 060	A100	27	60	21	48	2.34	B
F1A100A-CMH32060	HSK A100 CMH 32 060	A100	32	60	24	58	2.5	B
F1A100A-CMH40070	HSK A100 CMH 40 070	A100	40	70	27	70	3.04	B

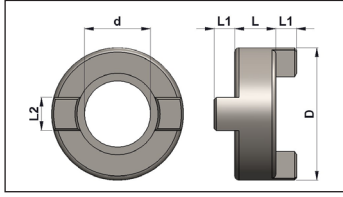
Pre balanced G6.3@20000 RPM
 Fine balancing G2.5@25000 RPM on request



HSK (DIN 69893)

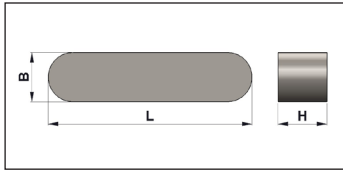
Spares

Drive Ring



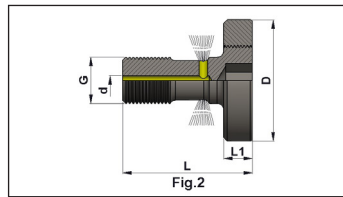
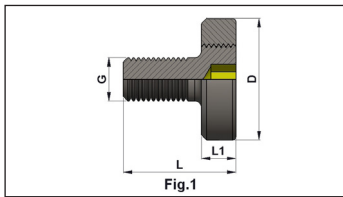
Part No.	d.	D	L	L1	L2
F1DRRG-CMH16	16	32	10	5	8
F1DRRG-CMH22	22	40	12	5.6	10
F1DRRG-CMH27	27	48	12	6.3	12
F1DRRG-CMH32	32	58	14	7	14
F1DRRG-CMH40	40	70	14	8	16

Parallel Key



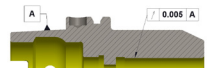
Part No.	Product name	d.	B	H	L
F1PLKY-04020	PARALLEL KEY 4x20	16	4	4	20
F1PLKY-06025	PARALLEL KEY 6x25	22	6	6	25
F1PLKY-07025	PARALLEL KEY 7x25	27	7	7	25
F1PLKY-08028	PARALLEL KEY 8x28	32	8	7	28
F1PLKY-10032	PARALLEL KEY 10x32	40	10	8	32

Cutter Clamping Screw



Part No.	D	L	L1	G	d.	FIG	Remarks	Allen Key
F1CCSN-22M10	28	26	8	M10	-	1	NORMAL	6mm
F1CCSN-16M08	20	23	7	M8	-	1	NORMAL	5mm
F1CCSN-27M12	35	31	9	M12	-	1	NORMAL	8mm
F1CCSN-32M16	42	36	10	M16	-	1	NORMAL	10mm
F1CCSN-40M20	52	41	11	M20	-	1	NORMAL	12mm
F1CCSN-60M30	75	60	15	M30	-	1	NORMAL	17mm
F1CCSN-50M24	75	49	13	M24	-	1	NORMAL	14mm
F1CCST-22M10	28	33	8	M10	3.2	2	THRU COOLANT	6mm
F1CCST-16M08	20	32	7	M8	2.5	2	THRU COOLANT	5mm
F1CCST-27M12	35	44	9	M12	3.2	2	THRU COOLANT	8mm
F1CCST-32M16	42	45	10	M16	3.2	2	THRU COOLANT	10mm
F1CCST-40M20	52	51	11	M20	3.2	2	THRU COOLANT	12mm

Pre balanced G6.3@20000 RPM
 Fine balancing G2.5@25000 RPM on request



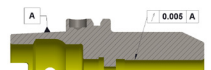
HSK (DIN 69893)

Accessories



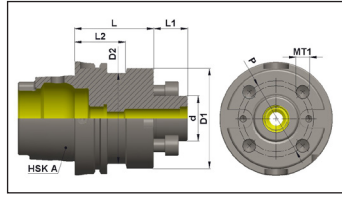
For Further Details Please Refer Accessories Catalog.

Pre balanced G6.3@20000 RPM
Fine balancing G2.5@25000 RPM on request



HSK (DIN 69893)

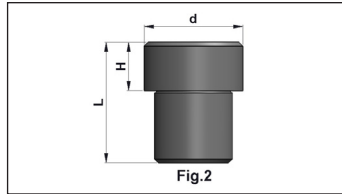
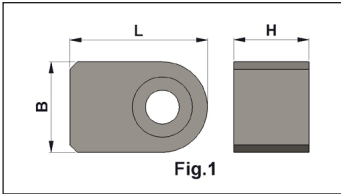
HSK A100



Part No.	Product name	Taper	d.	L	D1	D2	L1	L2	P	T1	Kgs	Group
F1A100X-FMH40070	HSK A 100 FMH 40 070	A100	40	70	88	80	30	45	66.7	M12	3.9	B
F1A100X-FMH60070	HSK A 100 FMH 60 070	A100	60	70	128	80	40	45	101.6	M16	6.2	B

Spares

Driving Key



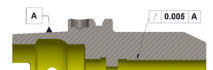
Part No.	B	d.	H	L	Allen Screw	FIG
F1DRKY-40FMH	16	-	16	24	M6	1
F1DRKY-60FMH	-	25.4	12.5	27.5	M6	2

Accessories



For Further Details Please Refer Accessories Catalog.

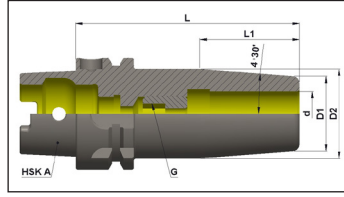
Pre balanced G6.3@20000 RPM
 Fine balancing G2.5@25000 RPM on request



HSK (DIN 69893)

HSK A50

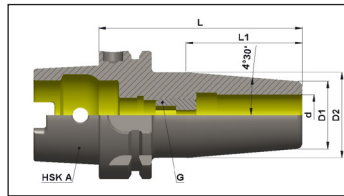
HSK A50 – Standard GPL



Part No.	Product name	Taper	d.	L	D1	D2	L1	G	Kgs	Group
F1A050A-SFC06060	HSK A 50 SFC 06 080	A50	6	80	21	27	36	M5	0.6	B
F1A050A-SFC08080	HSK A 50 SFC 08 080	A50	8	80	21	27	36	M6	0.6	B
F1A050A-SFC10085	HSK A 50 SFC 10 085	A50	10	85	24	32	42	M8X1	0.64	B
F1A050A-SFC12090	HSK A 50 SFC 12 090	A50	12	90	24	32	47	M10x1	0.66	B
F1A050A-SFC14090	HSK A 50 SFC 14 090	A50	14	90	27	34	47	M10X1	0.68	B
F1A050A-SFC16095	HSK A 50 SFC 16 095	A50	16	95	27	34	50	M12X1	0.7	B
F1A050A-SFC18095	HSK A 50 SFC 18 095	A50	18	95	33	42	50	M12X1	0.88	B
F1A050A-SFC20100	HSK A 50 SFC 20 100	A50	20	100	33	42	52	M16X1	0.9	B

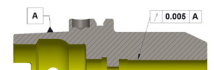
HSK A63

HSK A63 – Standard GPL



Part No.	Product name	Taper	d.	L	D1	D2	L1	G	Kgs	Group
F1A063A-SFC06080	HSK A 63 SFC 06 080	A63	6	80	21	27	36	M5	0.83	B
F1A063A-SFC08080	HSK A 63 SFC 08 080	A63	8	80	21	27	36	M6	0.83	B
F1A063A-SFC10085	HSK A 63 SFC 10 085	A63	10	85	24	32	42	M8X1	0.92	B
F1A063A-SFC12090	HSK A 63 SFC 12 090	A63	12	90	24	32	47	M10X1	0.92	B
F1A063A-SFC14090	HSK A 63 SFC 14 090	A63	14	90	27	34	47	M10X1	0.93	B
F1A063A-SFC16095	HSK A 63 SFC 16 095	A63	16	95	27	34	50	M12X1	0.96	B
F1A063A-SFC18095	HSK A 63 SFC 18 095	A63	18	95	33	42	50	M12X1	1.15	B
F1A063A-SFC20100	HSK A 63 SFC 20 100	A63	20	100	33	42	52	M16X1	1.18	B
F1A063A-SFC25115	HSK A 63 SFC 25 115	A63	25	115	44	53	58	M16X1	1.75	B

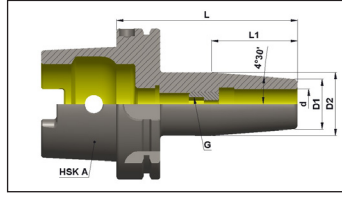
Pre balanced G6.3@20000 RPM
 Fine balancing G2.5@25000 RPM on request



HSK (DIN 69893)

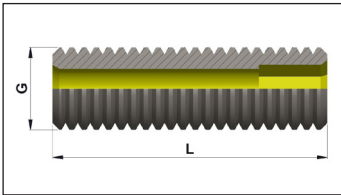
HSK A100

HSK A100 – Standard GPL



Part No.	Product name	Taper	d.	L	D1	D2	L1	G	Kgs	Group
F1A100A-SFC06120	HSK A 100 SFC 06 120	A100	6	120	21	27	36	M5	2.4	B
F1A100A-SFC08120	HSK A 100 SFC 08 120	A100	8	120	21	27	36	M6	2.4	B
F1A100A-SFC10120	HSK A 100 SFC 10 120	A100	10	120	24	32	42	M8X1	2.5	B
F1A100A-SFC12120	HSK A 100 SFC 12 120	A100	12	120	24	32	47	M10X1	2.5	B
F1A100A-SFC14120	HSK A 100 SFC 14 120	A100	14	120	27	34	47	M10X1	2.5	B
F1A100A-SFC16120	HSK A 100 SFC 16 120	A100	16	120	27	34	50	M12X1	2.6	B
F1A100A-SFC18120	HSK A 100 SFC 18 120	A100	18	120	33	42	50	M12X1	2.7	B
F1A100A-SFC20120	HSK A 100 SFC 20 120	A100	20	120	33	42	52	M16X1	2.8	B
F1A100A-SFC25120	HSK A 100 SFC 25 120	A100	25	120	44	53	58	M16X1	3	B
F1A100A-SFC32120	HSK A 100 SFC 32 120	A100	32	120	44	53	58	M16X1	3	B

Spares



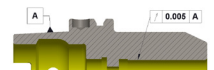
Part No.	G	L
F1SCWM-20M06	M6	20
F1SCWM-20M08	M8	20
F1SCWM-20M10	M10	20
F1SCWM-20M12	M12	20
F1SCWM-20M16	M16	20
F1SCWM-20M05	M5	20

Accessories



For Further Details Please Refer Accessories Catalog.

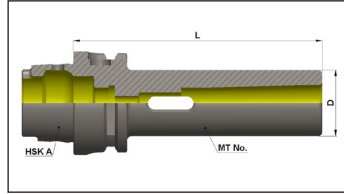
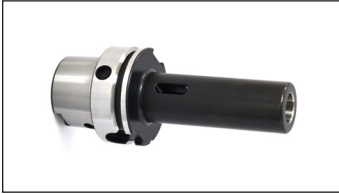
Pre balanced G6.3@20000 RPM
 Fine balancing G2.5@25000 RPM on request



HSK (DIN 69893)

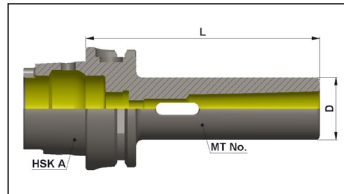
HSK A

HSK A50



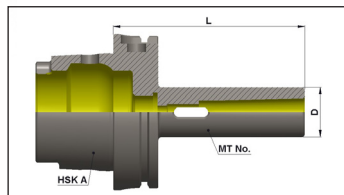
Part No.	Product name	Taper	MT No.	L	D1	Kgs	Group
F1A050A-MTA01100	HSK A 50 MTA 01 100	A50	1	100	25	0.6	B
F1A050A-MTA02120	HSK A 50 MTA 02 120	A50	2	120	32	0.9	B
F1A050A-MTA03140	HSK A 50 MTA 03 140	A50	3	140	40	1.2	B

HSK A63



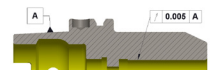
Part No.	Product name	Taper	MT No.	L	D1	Kgs	Group
F1A063A-MTA01100	HSK A 63 MTA 01 100	A63	1	100	25	0.9	B
F1A063A-MTA02120	HSK A 63 MTA 02 120	A63	2	120	32	1.1	B
F1A063A-MTA03140	HSK A 63 MTA 03 140	A63	3	140	40	1.5	B
F1A063A-MTA04160	HSK A 63 MTA 04 160	A63	4	160	48	1.9	B

HSK A100



Part No.	Product name	Taper	MT No.	L	D1	Kgs	Group
F1A100A-MTA01110	HSK A 100 MTA 01 110	A100	1	110	25	2.2	B
F1A100A-MTA02120	HSK A 100 MTA 02 120	A100	2	120	32	2.4	B
F1A100A-MTA03150	HSK A 100 MTA 03 150	A100	3	150	40	2.9	B
F1A100A-MTA04170	HSK A 100 MTA 04 170	A100	4	170	48	3.3	B
F1A100A-MTA05200	HSK A 100 MTA 05 200	A100	5	200	70	4.5	B

Pre balanced G6.3@20000 RPM
 Fine balancing G2.5@25000 RPM on request



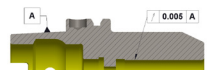
HSK (DIN 69893)

Accessories



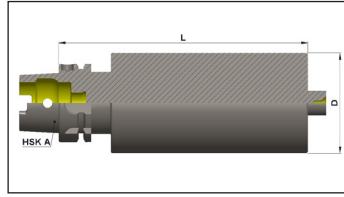
For Further Details Please Refer Accessories Catalog.

Pre balanced G6.3@20000 RPM
Fine balancing G2.5@25000 RPM on request



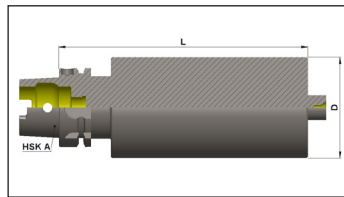
HSK (DIN 69893)

HSK A63



Part No.	Product name	Taper	D	L	Kgs	Group
F1A063X-BLA064250	HSK A63 BLANK 64 250	A63A	64	250	6	B
F1A063X-BLA080200	HSK A63 BLANK 80 200	A63A	80	200	7	B

HSK A100



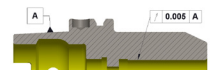
Part No.	Product name	Taper	D	L	Kgs	Group
F1A100X-BLA100150	HSK A100 BLANK 100 150	A100	100	150	8.9	B
F1A100X-BLA100250	HSK A100 BLANK 100 250	A100	100	250	15	B

Accessories



For Further Details Please Refer Accessories Catalog.

Pre balanced G6.3@20000 RPM
 Fine balancing G2.5@25000 RPM on request





Falcon®

Falcon Toolings

SF. No. 205 / 1 & 2, Kalapatti, Coimbatore - 641 048, India

Ph : +91 (422) 266 6156 , +91 (422) 266 6322

Email : sales@falcontoolings.com

Web: www.falcontoolings.com