



ACCESSORIES



2019 Catalog

World-class products

Precise quality

Satisfied customer

ZERTIFIKAT ♦ CERTIFICATE ♦ 認証証書 ♦ СЕРТИФИКАТ ♦ CERTIFICADO ♦ CERTIFICAT



CERTIFICATE

The Certification Body
of TÜV SÜD South Asia Private Limited
certifies that



Falcon Toolings
SF No -205/1 & 2, Kuttai Thottam, Kalapatti post
Coimbatore- 641048, Tamil Nadu, INDIA

has implemented a Quality Management System
in accordance with ISO 9001:2015
For Scope of

Design, Development, Manufacturing & Supply of Toolings

The certificate is valid in conjunction
with the main-certificate from 2018-01-20 until 2021-01-19
Subject to successful completion of annual periodic audits
The present status of this Certificate can be obtained on www.tuv.sud.in
Further clarifications regarding the scope of this certificate may be obtained by consulting the certification body

Certificate Registration No. **99 100 10587/01**

Date of Initial certification : 2015-01-20

Certification Body
of TÜV SÜD South Asia Private Limited, Mumbai
Member of TÜV SÜD Group



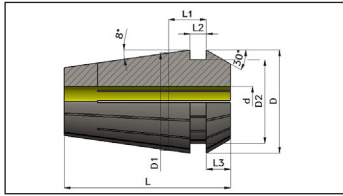
ACCESSORIES

Table of contents

Description	Page	Description	Page
ER - Collets DIN 6499		SFC - Shrink Fit Extensions	
<i>ER - Collet Systems DIN 6499</i>	4	<i>Shrink Fit Extensions</i>	21
Dimensions.....	4	<i>Spares</i>	21
Concentricity.....	4		
ERS - Standard Collets	5	CYS - Cylindrical shank extensions- ERS	
Collets – ER8.....	5	<i>Cylindrical shank -ER Mini</i>	22
Collets – ER11.....	5	<i>Cylindrical shank -ER</i>	22
Collets – ER16.....	5	<i>Spares</i>	22
Collets – ER20.....	6	<i>Accessories</i>	23
Collets – ER25.....	6		
Collets – ER32.....	6	MTA – B - Morse Taper Collet Chucks	
Collets – ER40.....	7	<i>MTA Type Collet Chucks</i>	24
Collets – ER50.....	7	Morse Taper Collect Chuck – TANG.....	24
ERT - Tap Collets	8	<i>MTB Type Collet Chucks</i>	24
Tap Collets ER16.....	8	Morse Taper Collect Chuck – THREADED.....	24
Tap Collets ER20.....	8	<i>Accessories</i>	24
Tap Collets ER25.....	8		
Tap Collets ER32.....	9	CL - CNC Lathe Holders	
Tap Collets ER40.....	9	<i>CL - Collet Chucks - ER</i>	25
Tap Collets ER50.....	9	<i>Spares</i>	25
ERH - High Precision Collets	10	<i>Accessories</i>	25
Collets – ER8.....	10		
Collets – ER11.....	10	6600 - CNC Lathe Boring Bar Sleeves	
Collets - ER16.....	10	<i>Boring Bar Sleeve</i>	26
Collets – ER20.....	11	<i>Boring Bar Sleeve MT</i>	26
Collets – ER25.....	11		
Collets – ER32.....	11	2211 - R8 Collet Chucks	
Collets – ER40.....	12	<i>R8 Collet Chucks</i>	27
ERN - Sealed Collets	13	<i>Accessories</i>	27
Collets – ER16.....	13		
Collets – ER20.....	13	55TB - Tool Clamping Device	
Collets – ER25.....	14	<i>Tool Clamping Device HSK</i>	28
Collets – ER32.....	14	<i>Tool Clamping Device ISO</i>	28
Collets – ER40.....	15		
Collets – ER50.....	15	66TS - Test Bars	
		<i>Test Bars – ISO Taper</i>	29
PS - Pull Stud		<i>Test Bars - HSK Taper</i>	29
<i>MAS 403 BT</i>	16		
<i>MAS 403 BT with TC hole</i>	16	ATC - ATC “0” Setting Mandrel	
<i>DIN 69872 A -WITH TC</i>	16	<i>ATC “0” Setting - ISO</i>	30
<i>DIN 69872 A -WITH TC O RING</i>	17	<i>ATC “0” Setting - HSK</i>	30
<i>DIN 69872 B -WITH O RING WITHOUT TC</i>	17		
<i>JIS 6339 SIMILAR TO DIN 69872-A TC</i>	17	KDCH - Drill Chucks	
<i>JIS 6339 SIMILAR TO DIN 69872-A</i>	17	<i>Drill Chucks</i>	31
<i>ISO 7388 -WITH TC HOLE</i>	18		
<i>ISO 7388 WITH TC O RING</i>	18	CTUB - Coolant Tube	
<i>MAZAK WITH TC</i>	18	<i>HSK -A</i>	32
<i>MAZAK WITH TC HOLE AND O RING</i>	18		
<i>MAS 403 BT with TC hole (Brother M/C)</i>	18	SPCT - Spanner For Coolant tube	
		<i>HSK -A</i>	33
5500 - ER Nut			
<i>Hexagonal Nut</i>	19		
<i>Mini Nut</i>	19		
<i>Slotted Nut</i>	19		
55SP - Spanner			
<i>Spanner For Hexagonal Nut</i>	20		
<i>Spanner For Mini Nut</i>	20		
<i>Spanner For Slotted Nut</i>	20		

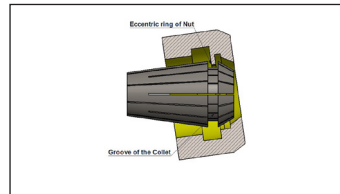
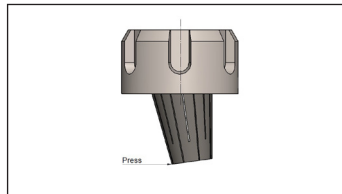
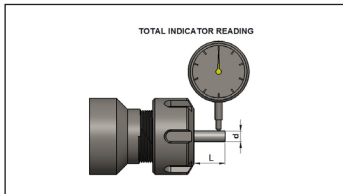
ER Collet Systems DIN 6499

Dimensions



Part No.	L	L1	L2	L3	D	D1	D2
ER 8	13.5	12.98	1.2	1.5	8.5	8.0	6.5
ER 11	18.0	3.80	2.0	2.5	11.5	11.0	9.5
ER 16	27.5	6.26	2.7	4.01	17.0	16.0	13.8
ER 20	31.5	6.36	2.8	4.8	21.0	20.0	17.4
ER 25	34.0	6.66	3.1	5.0	26.0	25.0	22.0
ER 32	40.0	7.16	3.6	5.5	33.0	32.0	29.2
ER 40	46.0	7.66	4.1	7.0	41.0	40.0	36.2
ER 50	60.0	12.60	5.5	8.5	52.0	50.0	46.0

Concentricity



Method of Insertion & Release of ER Collets

1. Insert collet into nut at angle as shown to engage extraction tongue in groove of collet
2. Screw nut onto collet with collet securely in nut
3. Insert tool to be gripped and lock nut

1. Hold nut in vertical position
2. Press collet side ways as shown by the arrow to release the collet from nut

Clamping range	L	Max T.I.R.
1.0 - 1.6	6	0.015
1.6 - 3.0	10	
3.0 - 6.0	16	
6.0 - 10.0	25	
10.0 - 18.0	40	0.020
18.0 - 26.0	50	
26.0 - 34.0	60	0.025

ACCESSORIES

ERS Standard Collets



Collets – ER8

Part No.	Product name	(D) RANGE
F1ERSM-08010	COLLETS STANDARD - METRIC ER08 010	1.0 – 0.5
F1ERSM-08015	COLLETS STANDARD - METRIC ER08 015	1.5 – 1.0
F1ERSM-08020	COLLETS STANDARD - METRIC ER08 020	2.0 - 1.5
F1ERSM-08025	COLLETS STANDARD - METRIC ER08 025	2.5 – 2.0
F1ERSM-08030	COLLETS STANDARD - METRIC ER08 030	3.0 – 2.5
F1ERSM-08035	COLLETS STANDARD - METRIC ER08 035	3.5 – 3.0
F1ERSM-08040	COLLETS STANDARD - METRIC ER08 040	4.0 – 3.5
F1ERSM-08045	COLLETS STANDARD - METRIC ER08 045	4.5 – 4.0
F1ERSM-08050	COLLETS - STANDARD - METRIC ER08 050	5.0 - 4.5
F1ERSM-08SET	COLLETS - STANDARD - METRIC ER08 SET	9 Pcs

Collets – ER11

Part No.	Product name	(D) RANGE
F1ERSM-11010	COLLETS STANDARD - METRIC ER11 010	1.0 - 0.5
F1ERSM-11015	COLLETS STANDARD - METRIC ER11 015	1.5 - 1.0
F1ERSM-11020	COLLETS STANDARD - METRIC ER11 020	2.0 - 1.5
F1ERSM-11025	COLLETS STANDARD - METRIC ER11 025	2.5 - 2.0
F1ERSM-11030	COLLETS STANDARD - METRIC ER11 030	3.0 - 2.5
F1ERSM-11035	COLLETS STANDARD - METRIC ER11 035	3.5 - 3.0
F1ERSM-11040	COLLETS STANDARD - METRIC ER11 040	4.0 - 3.5
F1ERSM-11045	COLLETS STANDARD - METRIC ER11 045	4.5 - 4.0
F1ERSM-11050	COLLETS STANDARD - METRIC ER11 050	5.0 - 4.5
F1ERSM-11055	COLLETS STANDARD - METRIC ER11 055	5.5 - 5.0
F1ERSM-11060	COLLETS STANDARD - METRIC ER11 060	6.0 - 5.5
F1ERSM-11065	COLLETS - STANDARD - METRIC ER11 065	6.5 - 6.0
F1ERSM-11070	COLLETS - STANDARD - METRIC ER11 070	7.0 - 6.5
F1ERSM-11SET	COLLETS STANDARD - METRIC ER11 SET	13PCS

Collets – ER16

Part No.	Product name	(D) RANGE
F1ERSM-16010	COLLETS - STANDARD - METRIC ER16 010	1.0 - 0.5
F1ERSM-16020	COLLETS - STANDARD - METRIC ER16 020	2.0 - 1.0
F1ERSM-16030	COLLETS - STANDARD - METRIC ER16 030	3.0 - 2.0
F1ERSM-16040	COLLETS - STANDARD - METRIC ER16 040	4.0 - 3.0
F1ERSM-16050	COLLETS - STANDARD - METRIC ER16 050	5.0 - 4.0
F1ERSM-16060	COLLETS - STANDARD - METRIC ER16 060	6.0 - 5.0
F1ERSM-16070	COLLETS - STANDARD - METRIC ER16 070	7.0 - 6.0
F1ERSM-16080	COLLETS - STANDARD - METRIC ER16 080	8.0 - 7.0
F1ERSM-16090	COLLETS - STANDARD - METRIC ER16 090	9.0 - 8.0
F1ERSM-16100	COLLETS - STANDARD - METRIC ER16 100	10.0 - 9.0
F1ERSM-16SET	COLLETS - STANDARD - METRIC ER16 SET	10PCS

ACCESSORIES

Collets – ER20

Part No.	Product name	(D) RANGE
F1ERSM-20020	COLLETS - STANDARD - METRIC ER20 020	2.0 – 1.0
F1ERSM-20030	COLLETS - STANDARD - METRIC ER20 030	3.0 – 2.0
F1ERSM-20040	COLLETS - STANDARD - METRIC ER20 040	4.0 – 3.0
F1ERSM-20050	COLLETS - STANDARD - METRIC ER20 050	5.0 – 4.0
F1ERSM-20060	COLLETS - STANDARD - METRIC ER20 060	6.0 – 5.0
F1ERSM-20070	COLLETS - STANDARD - METRIC ER20 070	7.0 – 6.0
F1ERSM-20080	COLLETS - STANDARD - METRIC ER20 080	8.0 – 7.0
F1ERSM-20090	COLLETS - STANDARD - METRIC ER20 090	9.0 – 8.0
F1ERSM-20100	COLLETS - STANDARD - METRIC ER20 100	10.0 – 9.0
F1ERSM-20110	COLLETS - STANDARD - METRIC ER20 110	11.0 – 10.0
F1ERSM-20120	COLLETS - STANDARD - METRIC ER20 120	12.0 – 11.0
F1ERSM-20130	COLLETS - STANDARD - METRIC ER20 130	13.0 – 12.0
F1ERSM-20SET	COLLETS - STANDARD - METRIC ER20 SET	12 Pcs

Collets – ER25

Part No.	Product name	(D) RANGE
F1ERSM-25020	COLLETS - STANDARD - METRIC ER25 020	2.0 – 1.0
F1ERSM-25030	COLLETS - STANDARD - METRIC ER25 030	3.0 – 2.0
F1ERSM-25040	COLLETS - STANDARD - METRIC ER25 040	4.0 – 3.0
F1ERSM-25050	COLLETS - STANDARD - METRIC ER25 050	5.0 – 4.0
F1ERSM-25060	COLLETS - STANDARD - METRIC ER25 060	6.0 – 5.0
F1ERSM-25070	COLLETS - STANDARD - METRIC ER25 070	7.0 – 6.0
F1ERSM-25080	COLLETS - STANDARD - METRIC ER25 080	8.0 – 7.0
F1ERSM-25090	COLLETS - STANDARD - METRIC ER25 090	9.0 – 8.0
F1ERSM-25100	COLLETS - STANDARD - METRIC ER25 100	10.0 – 9.0
F1ERSM-25110	COLLETS - STANDARD - METRIC ER25 110	11.0 – 10.0
F1ERSM-25120	COLLETS - STANDARD - METRIC ER25 120	12.0 – 11.0
F1ERSM-25130	COLLETS - STANDARD - METRIC ER25 130	13.0 – 12.0
F1ERSM-25140	COLLETS - STANDARD - METRIC ER25 140	14.0 – 13.0
F1ERSM-25150	COLLETS - STANDARD - METRIC ER25 150	15.0 – 14.0
F1ERSM-25160	COLLETS - STANDARD - METRIC ER25 160	16.0 – 15.0
F1ERSM-25SET	COLLETS - STANDARD - METRIC ER25 SET	15 Pcs

Collets – ER32

Part No.	Product name	(D) RANGE
F1ERSM-32030	COLLETS - STANDARD - METRIC ER32 030	3.0 – 2.0
F1ERSM-32040	COLLETS - STANDARD - METRIC ER32 040	4.0 – 3.0
F1ERSM-32050	COLLETS - STANDARD - METRIC ER32 050	5.0 – 4.0
F1ERSM-32060	COLLETS - STANDARD - METRIC ER32 060	6.0 – 5.0
F1ERSM-32070	COLLETS - STANDARD - METRIC ER32 070	7.0 – 6.0
F1ERSM-32080	COLLETS - STANDARD - METRIC ER32 080	8.0 – 7.0
F1ERSM-32090	COLLETS - STANDARD - METRIC ER32 090	9.0 – 8.0
F1ERSM-32100	COLLETS - STANDARD - METRIC ER32 100	10.0 – 9.0
F1ERSM-32110	COLLETS - STANDARD - METRIC ER32 110	11.0 – 10.0
F1ERSM-32120	COLLETS - STANDARD - METRIC ER32 120	12.0 – 11.0
F1ERSM-32130	COLLETS - STANDARD - METRIC ER32 130	13.0 – 12.0
F1ERSM-32140	COLLETS - STANDARD - METRIC ER32 140	14.0 – 13.0
F1ERSM-32150	COLLETS - STANDARD - METRIC ER32 150	15.0 – 14.0
F1ERSM-32160	COLLETS - STANDARD - METRIC ER32 160	16.0 – 15.0
F1ERSM-32170	COLLETS - STANDARD - METRIC ER32 170	17.0 – 16.0
F1ERSM-32180	COLLETS - STANDARD - METRIC ER32 180	18.0 – 17.0
F1ERSM-32190	COLLETS - STANDARD - METRIC ER32 190	19.0 – 18.0
F1ERSM-32200	COLLETS - STANDARD - METRIC ER32 200	20.0 – 19.0
F1ERSM-32SET	COLLETS - STANDARD - METRIC ER32 SET	18Pcs

ACCESSORIES

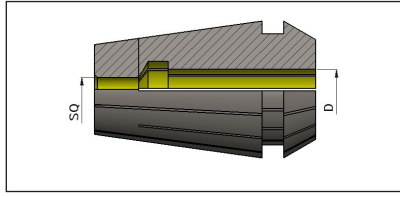
Collets – ER40

Part No.	Product name	(D) RANGE
F1ERSM-40040	COLLETS - STANDARD - METRIC ER40 040	4.0 – 3.0
F1ERSM-40050	COLLETS - STANDARD - METRIC ER40 050	5.0 – 4.0
F1ERSM-40060	COLLETS - STANDARD - METRIC ER40 060	6.0 - 5.0
F1ERSM-40070	COLLETS - STANDARD - METRIC ER40 070	7.0 – 6.0
F1ERSM-40080	COLLETS - STANDARD - METRIC ER40 080	8.0 – 7.0
F1ERSM-40090	COLLETS - STANDARD - METRIC ER40 090	9.0 – 8.0
F1ERSM-40100	COLLETS - STANDARD - METRIC ER40 100	10.0 – 9.0
F1ERSM-40110	COLLETS - STANDARD - METRIC ER40 110	11.0 – 10.0
F1ERSM-40120	COLLETS - STANDARD - METRIC ER40 120	12.0 – 11.0
F1ERSM-40130	COLLETS - STANDARD - METRIC ER40 130	13.0 – 12.0
F1ERSM-40140	COLLETS - STANDARD - METRIC ER40 140	14.0 – 13.0
F1ERSM-40150	COLLETS - STANDARD - METRIC ER40 150	15.0 – 14.0
F1ERSM-40160	COLLETS - STANDARD - METRIC ER40 160	16.0 – 15.0
F1ERSM-40170	COLLETS - STANDARD - METRIC ER40 170	17.0 – 16.0
F1ERSM-40180	COLLETS - STANDARD - METRIC ER40 180	18.0 – 17.0
F1ERSM-40190	COLLETS - STANDARD - METRIC ER40 190	19.0 – 18.0
F1ERSM-40200	COLLETS - STANDARD - METRIC ER40 200	20.0 – 19.0
F1ERSM-40210	COLLETS - STANDARD - METRIC ER40 210	21.0 – 20.0
F1ERSM-40220	COLLETS - STANDARD - METRIC ER40 220	22.0 – 21.0
F1ERSM-40230	COLLETS - STANDARD - METRIC ER40 230	23.0 – 22.0
F1ERSM-40240	COLLETS - STANDARD - METRIC ER40 240	24.0 – 23.0
F1ERSM-40250	COLLETS - STANDARD - METRIC ER40 250	25.0 – 24.0
F1ERSM-40260	COLLETS - STANDARD - METRIC ER40 260	26.0 – 25.0
F1ERSM-40SET	COLLETS - STANDARD - METRIC ER40 SET	23 Pcs

Collets – ER50

Part No.	Product name	(D) RANGE
F1ERSM-50120	COLLETS - STANDARD – METRIC ER50 120	12.0 – 10.0
F1ERSM-50140	COLLETS - STANDARD - METRIC ER50 140	14.0 – 12.0
F1ERSM-50160	COLLETS - STANDARD - METRIC ER50 160	16.0 – 14.0
F1ERSM-50180	COLLETS - STANDARD - METRIC ER50 180	18.0 – 16.0
F1ERSM-50200	COLLETS - STANDARD - METRIC ER50 200	20.0 – 18.0
F1ERSM-50220	COLLETS - STANDARD - METRIC ER50 220	22.0 – 20.0
F1ERSM-50240	COLLETS - STANDARD - METRIC ER50 240	24.0 – 22.0
F1ERSM-50260	COLLETS - STANDARD - METRIC ER50 260	26.0 – 24.0
F1ERSM-50280	COLLETS - STANDARD - METRIC ER50 280	28.0 – 26.0
F1ERSM-50300	COLLETS - STANDARD - METRIC ER50 300	30.0 – 28.0
F1ERSM-50320	COLLETS - STANDARD - METRIC ER50 320	32.0 – 30.0
F1ERSM-50340	COLLETS - STANDARD - METRIC ER50 340	34.0 – 32.0
F1ERSM-50SET	COLLETS - STANDARD - METRIC ER50 SET	12 Pcs

ERT - Tap Collets



Tap Collets ER16

Part No.	Product name	DIA	SQ
F1ERTX-16501	TAP COLLETS ER16 D 3.5 X SQ 2.7	3.50	2.70
F1ERTX-16502	TAP COLLETS ER16 D 4.0 X SQ 3.0	4.00	3.00
F1ERTX-16503	TAP COLLETS ER16 D 4.5 X SQ 3.4	4.50	3.40
F1ERTX-16504	TAP COLLETS ER16 D 5.5 X SQ 4.3	5.50	4.30
F1ERTX-16505	TAP COLLETS ER16 D 6.0 X SQ 4.9	6.00	4.90
F1ERTX-16506	TAP COLLETS ER16 D 7.0 X SQ 5.5	7.00	5.50
F1ERTX-16507	TAP COLLETS ER16 D 8.0 X SQ 6.2	8.00	6.20
F1ERTX-16508	TAP COLLETS ER16 D 9.0 X SQ 7.0	9.00	7.00
F1ERTX-16509	TAP COLLETS ER16 D 10.0 X SQ 8.0	10.00	8.00

Tap Collets ER20

Part No.	Product name	DIA	SQ
F1ERTX-20501	TAP COLLETS ER20 D 3.5 X SQ 2.7	3.50	2.70
F1ERTX-20502	TAP COLLETS ER20 D 4.0 X SQ 3.0	4.00	3.00
F1ERTX-20503	TAP COLLETS ER20 D 4.5 X SQ 3.4	4.50	3.40
F1ERTX-20504	TAP COLLETS ER20 D 5.5 X SQ 4.3	5.50	4.30
F1ERTX-20505	TAP COLLETS ER20 D 6.0 X SQ 4.9	6.00	4.90
F1ERTX-20506	TAP COLLETS ER20 D 7.0 X SQ 5.5	7.00	5.50
F1ERTX-20507	TAP COLLETS ER20 D 8.0 X SQ 6.2	8.00	6.20
F1ERTX-20508	TAP COLLETS ER20 D 9.0 X SQ 7.0	9.00	7.00
F1ERTX-20509	TAP COLLETS ER20 D 10.0 X SQ 8.0	10.00	8.00

Tap Collets ER25

Part No.	Product name	DIA	SQ
F1ERTX-25501	TAP COLLETS ER25 D 3.5 X SQ 2.7	3.50	2.70
F1ERTX-25502	TAP COLLETS ER25 D 4.0 X SQ 3.0	4.00	3.00
F1ERTX-25503	TAP COLLETS ER25D 4.5 X SQ 3.4	4.50	3.40
F1ERTX-25504	TAP COLLETS ER25 D 5.5 X SQ 4.3	5.50	4.30
F1ERTX-25505	TAP COLLETS ER25 D 6.0 X SQ 4.9	6.00	4.90
F1ERTX-25506	TAP COLLETS ER25 D 7.0 X SQ 5.5	7.00	5.50
F1ERTX-25507	TAP COLLETS ER25 8.0 X SQ 6.2	8.00	6.20
F1ERTX-25508	TAP COLLETS ER25 D 9.0 X SQ 7.0	9.00	7.00
F1ERTX-25509	TAP COLLETS ER25 D 10.0 X SQ 8.0	10.00	8.00
F1ERTX-25510	TAP COLLETS ER25 D 11.0 X SQ 9.0	11	9.00
F1ERTX-25511	TAP COLLETS ER25 D 12.0 X SQ 9.0	12.00	9.00
F1ERTX-25512	TAP COLLETS ER25 D 12.5 X SQ 10.0	12.50	10.00
F1ERTX-25513	TAP COLLETS ER25 D 14.0 X SQ 11.0	14.00	11.00
F1ERTX-25514	TAP COLLETS ER25 D 16.0 X SQ 12.0	16.00	12.00
F1ERTX-25515	TAP COLLETS ER25 D 6.3 X SQ 4.9	6.30	4.90
F1ERTX-25516	TAP COLLETS ER25 D 9.0 X SQ 7.1	9.00	7.1

ACCESSORIES

Tap Collets ER32

Part No.	Product name	DIA	SQ
F1ERTX-32503	TAP COLLETS ER32 D 4.5 X SQ 3.4	4.50	3.40
F1ERTX-32504	TAP COLLETS ER32 D 5.5 X SQ 4.3	5.50	4.30
F1ERTX-32505	TAP COLLETS ER32 D 6.0 X SQ 4.9	6.00	4.90
F1ERTX-32506	TAP COLLETS ER32 D 7.0 X SQ 5.5	7.00	5.50
F1ERTX-32507	TAP COLLETS ER32 D 8.0 X SQ 6.2	8.00	6.20
F1ERTX-32508	TAP COLLETS ER32 D 9.0 X SQ 7.0	9.00	7.00
F1ERTX-32509	TAP COLLETS ER32 D 10.0 X SQ 8.0	10.00	8.00
F1ERTX-32510	TAP COLLETS ER32 D 11.0 X SQ 9.0	11.00	9.00
F1ERTX-32511	TAP COLLETS ER32 D 12.0 X SQ 9.0	12.0	9.00
F1ERTX-32513	TAP COLLETS ER32 D 14.0 X SQ 11.0	14.00	11.00
F1ERTX-32514	TAP COLLETS ER32 D 16.0 X SQ 12.0	16.00	12.00
F1ERTX-32512	TAP COLLETS ER32 D 12.5 X SQ 10.0	12.50	10.00
F1ERTX-32516	TAP COLLETS ER32 D 9.0 X SQ 7.1	9.00	7.1
F1ERTX-32517	TAP COLLETS ER32 D 13.7 X SQ 11.0	13.70	11.0
F1ERTX-32518	TAP COLLETS ER32 D 14.0 X SQ 11.2	14.00	11.2
F1ERTX-32519	TAP COLLETS ER32 D 18.0 X SQ 14.5	18.00	14.50
F1ERTX-32520	TAP COLLETS ER32 D 6.3 X SQ 5.0	6.30	5.0

Tap Collets ER40

Part No.	Product name	DIA	SQ
F1ERTX-40506	TAP COLLETS ER40 D 7.0 X SQ 5.5	7.0	5.50
F1ERTX-40507	TAP COLLETS ER40 D 8.0 X SQ 6.2	8.00	6.20
F1ERTX-40508	TAP COLLETS ER40 D 9.0 X SQ 7.0	9.00	7.00
F1ERTX-40509	TAP COLLETS ER40 D 10.0 X SQ 8.0	10.0	8.0
F1ERTX-40510	TAP COLLETS ER40 D 11.0 X SQ 9.0	11.0	9.0
F1ERTX-40511	TAP COLLETS ER40 D 12.0 X SQ 9.0	12.0	9.0
F1ERTX-40513	TAP COLLETS ER40 D 14.0 X SQ 11.0	14.0	11.0
F1ERTX-40514	TAP COLLETS ER40 D 16.0 X SQ 12.0	16.0	12.0
F1ERTX-40519	TAP COLLETS ER40 D18.0 X SQ 14.5	18.0	14.50
F1ERTX-40505	TAP COLLETS ER40 D6.0 X SQ 4.9	6.0	4.9
F1ERTX-40522	TAP COLLETS ER40 D20 X SQ 16.0	20.0	16.0
F1ERTX-40503	TAP COLLETS ER40 D4.5 X SQ 3.4	4.50	3.40
F1ERTX-40512	TAP COLLETS ER40 D12.5 X SQ 10.0	12.5	10.0
F1ERTX-40515	TAP COLLETS ER40 D6.3 X SQ 4.9	6.30	4.90
F1ERTX-40521	TAP COLLETS ER40 D17.5 X SQ 13.0	17.50	13.0
F1ERTX-40524	TAP COLLETS ER40 D25 X SQ 20	25.0	20.0

Tap Collets ER50

Part No.	Product name	DIA	SQ
F1ERTX-50507	TAP COLLETS ER50 D 8.0 X SQ 6.2	8.0	6.2
F1ERTX-50508	TAP COLLETS ER50 D 9.0 X SQ 7.0	9.0	7.0
F1ERTX-50509	TAP COLLETS ER50 D 10.0 X SQ 8.0	10.0	8.0
F1ERTX-50510	TAP COLLETS ER50 D 11.0 X SQ 9.0	11.0	9.0
F1ERTX-50511	TAP COLLETS ER50 D 12.0 X SQ 9.0	12.0	9.0
F1ERTX-50513	TAP COLLETS ER50 D 14.0 X SQ 11.0	14.0	11.0
F1ERTX-50514	TAP COLLETS ER50 D 16.0 X SQ 12.0	16.0	12.0
F1ERTX-50519	TAP COLLETS ER50 D18.0 X SQ 14.5	18.0	14.5
F1ERTX-50522	TAP COLLETS ER50 D 20.0 X SQ 16.0	20.0	16.0
F1ERTX-50523	TAP COLLETS ER50 D 22.0 X SQ 18.0	22.0	18.0
F1ERTX-50524	TAP COLLETS ER50 D 25.0 X SQ 20.0	25.0	20.0
F1ERTX-50525	TAP COLLETS ER50 D 28.0 X SQ 22.0	28.0	22.0
F1ERTX-50526	TAP COLLETS ER50 D 32.0 X SQ 24.0	32.0	24.0

ACCESSORIES

ERH - High Precision Collets



ER Collets DIN 6499

Collets – ER8

Part No.	Product name	(D) RANGE
F1ERHM-08010	HP COLLETS - METRIC ER08 010	1.0 - 0.5
F1ERHM-08015	HP COLLETS - METRIC ER08 015	1.5 - 1.0
F1ERHM-08020	HP COLLETS - METRIC ER08 020	2.0 - 1.5
F1ERHM-08025	HP COLLETS - METRIC ER08 025	2.5 - 2.0
F1ERHM-08030	HP COLLETS - METRIC ER08 030	3.0 - 2.5
F1ERHM-08035	HP COLLETS - METRIC ER08 035	3.5 - 3.0
F1ERHM-08040	HP COLLETS - METRIC ER08 040	4.0 - 3.5
F1ERHM-08045	HP COLLETS - METRIC ER08 045	4.5 - 4.0
F1ERHM-08050	HP COLLETS - METRIC ER08 050	5.0 - 4.5
F1ERHM-08SET	HP COLLETS - METRIC ER08 SET	9PCS

Collets – ER11

Part No.	Product name	(D) RANGE
F1ERHM-11010	HP COLLETS - METRIC ER11 010	1.0 - 0.5
F1ERHM-11015	HP COLLETS - METRIC ER11 015	1.5 - 1.0
F1ERHM-11020	HP COLLETS - METRIC ER11 020	2.0 - 1.5
F1ERHM-11025	HP COLLETS - METRIC ER11 025	2.5 - 2.0
F1ERHM-11030	HP COLLETS - METRIC ER11 030	3.0 - 2.5
F1ERHM-11040	HP COLLETS - METRIC ER11 040	4.0 - 3.5
F1ERHM-11045	HP COLLETS - METRIC ER11 045	4.5 - 4.0
F1ERHM-11050	HP COLLETS - METRIC ER11 050	5.0 - 4.5
F1ERHM-11055	HP COLLETS - METRIC ER11 055	5.5 - 5.0
F1ERHM-11060	HP COLLETS - METRIC ER11 060	6.0 - 5.5
F1ERHM-11065	HP COLLETS - METRIC ER11 065	6.5 - 6.0
F1ERHM-11070	HP COLLETS - METRIC ER11 070	7.0 - 6.5
F1ERHM-11SET	HP COLLETS - METRIC ER11 SET	13 PCS
F1ERHM-11035	HP COLLETS - METRIC ER11 035	3.5 - 3.0

Collets - ER16

Part No.	(D) RANGE	Product name
F1ERHM-16010	HP COLLETS - METRIC ER16 010	1.0 - 0.5
F1ERHM-16020	HP COLLETS - METRIC ER16 020	2.0 - 1.0
F1ERHM-16030	HP COLLETS - METRIC ER16 030	3.0 - 2.0
F1ERHM-16040	HP COLLETS - METRIC ER16 040	4.0 - 3.0
F1ERHM-16050	HP COLLETS - METRIC ER16 050	5.0 - 4.0
F1ERHM-16060	HP COLLETS - METRIC ER16 060	6.0 - 5.0
F1ERHM-16070	HP COLLETS - METRIC ER16 070	7.0 - 6.0
F1ERHM-16080	HP COLLETS - METRIC ER16 080	8.0 - 7.0
F1ERHM-16090	HP COLLETS - METRIC ER16 090	9.0 - 8.0
F1ERHM-16100	HP COLLETS - METRIC ER16 100	10.0 - 9.0
F1ERHM-16SET	HP COLLETS - METRIC ER16 SET	10 PCS

ACCESSORIES

Collets – ER20

Part No.	Product name	(D) RANGE
F1ERHM-20020	HP COLLETS - METRIC ER20 020	2.0 - 1.0
F1ERHM-20030	HP COLLETS - METRIC ER20 030	3.0 - 2.0
F1ERHM-20040	HP COLLETS - METRIC ER20 040	4.0 - 3.0
F1ERHM-20050	HP COLLETS - METRIC ER20 050	5.0 - 4.0
F1ERHM-20060	HP COLLETS - METRIC ER20 060	6.0 - 5.0
F1ERHM-20070	HP COLLETS - METRIC ER20 070	7.0 - 6.0
F1ERHM-20080	HP COLLETS - METRIC ER20 080	8.0 - 7.0
F1ERHM-20090	HP COLLETS - METRIC ER20 090	9.0 - 8.0
F1ERHM-20100	HP COLLETS - METRIC ER20 100	10.0 - 9.0
F1ERHM-20110	HP COLLETS - METRIC ER20 110	11.0 - 10.0
F1ERHM-20120	HP COLLETS - METRIC ER20 120	12.0 - 11.0
F1ERHM-20130	HP COLLETS - METRIC ER20 130	13.0 - 12.0
F1ERHM-20SET	HP COLLETS - METRIC ER20 SET	12 Pcs

Collets – ER25

Part No.	Product name	(D) RANGE
F1ERHM-25020	HP COLLETS - METRIC ER25 020	2.0 - 1.0
F1ERHM-25030	HP COLLETS - METRIC ER25 030	3.0 - 2.0
F1ERHM-25040	HP COLLETS - METRIC ER25 040	4.0 - 3.0
F1ERHM-25050	HP COLLETS - METRIC ER25 050	5.0 - 4.0
F1ERHM-25060	HP COLLETS - METRIC ER25 060	6.0 - 5.0
F1ERHM-25070	HP COLLETS - METRIC ER25 070	7.0 - 6.0
F1ERHM-25080	HP COLLETS - METRIC ER25 080	8.0 - 7.0
F1ERHM-25090	HP COLLETS - METRIC ER25 090	9.0 - 8.0
F1ERHM-25100	HP COLLETS - METRIC ER25 100	10.0 - 9.0
F1ERHM-25110	HP COLLETS - METRIC ER25 110	11.0 - 10.0
F1ERHM-25120	HP COLLETS - METRIC ER25 120	12.0 - 11.0
F1ERHM-25130	HP COLLETS - METRIC ER25 130	13.0 - 12.0
F1ERHM-25140	HP COLLETS - METRIC ER25 140	14.0 - 13.0
F1ERHM-25150	HP COLLETS - METRIC ER25 150	15.0 - 14.0
F1ERHM-25160	HP COLLETS - METRIC ER25 160	16.0 - 15.0
F1ERHM-25SET	HP COLLETS - METRIC ER25 SET	15 Pcs

Collets – ER32

Part No.	Product name	(D) RANGE
F1ERHM-32030	HP COLLETS - METRIC ER32 030	3.0 - 2.0
F1ERHM-32040	HP COLLETS - METRIC ER32 040	4.0 - 3.0
F1ERHM-32050	HP COLLETS - METRIC ER32 050	5.0 - 4.0
F1ERHM-32060	HP COLLETS - METRIC ER32 060	6.0 - 5.0
F1ERHM-32070	HP COLLETS - METRIC ER32 070	7.0 - 6.0
F1ERHM-32080	HP COLLETS - METRIC ER32 080	8.0 - 7.0
F1ERHM-32090	HP COLLETS - METRIC ER32 090	9.0 - 8.0
F1ERHM-32100	HP COLLETS - METRIC ER32 100	10.0 - 9.0
F1ERHM-32110	HP COLLETS - METRIC ER32 110	11.0 - 10.0
F1ERHM-32120	HP COLLETS - METRIC ER32 120	12.0 - 11.0
F1ERHM-32130	HP COLLETS - METRIC ER32 130	13.0 - 12.0
F1ERHM-32140	HP COLLETS - METRIC ER32 140	14.0 - 13.0
F1ERHM-32150	HP COLLETS - METRIC ER32 150	15.0 - 14.0
F1ERHM-32160	HP COLLETS - METRIC ER32 160	16.0 - 15.0
F1ERHM-32170	HP COLLETS - METRIC ER32 170	17.0 - 16.0
F1ERHM-32180	HP COLLETS - METRIC ER32 180	18.0 - 17.0
F1ERHM-32190	HP COLLETS - METRIC ER32 190	19.0 - 18.0
F1ERHM-32200	HP COLLETS - METRIC ER32 200	20.0 - 19.0
F1ERHM-32SET	HP COLLETS - METRIC ER32 SET	18 Pcs

ACCESSORIES

Collets – ER40

Part No.	Product name	(D) RANGE
F1ERHM-40040	HP COLLETS - METRIC ER40 040	4.0 - 3.0
F1ERHM-40050	HP COLLETS - METRIC ER40 050	5.0 - 4.0
F1ERHM-40060	HP COLLETS - METRIC ER40 060	6.0 - 5.0
F1ERHM-40070	HP COLLETS - METRIC ER40 070	7.0 - 6.0
F1ERHM-40080	HP COLLETS - METRIC ER40 080	8.0 - 7.0
F1ERHM-40090	HP COLLETS - METRIC ER40 090	9.0 - 8.0
F1ERHM-40100	HP COLLETS - METRIC ER40 100	10.0 - 9.0
F1ERHM-40110	HP COLLETS - METRIC ER40 110	11.0 - 10.0
F1ERHM-40120	HP COLLETS - METRIC ER40 120	12.0 - 11.0
F1ERHM-40130	HP COLLETS - METRIC ER40 130	13.0 - 12.0
F1ERHM-40140	HP COLLETS - METRIC ER40 140	14.0 - 13.0
F1ERHM-40150	HP COLLETS - METRIC ER40 150	15.0 - 14.0
F1ERHM-40160	HP COLLETS - METRIC ER40 160	16.0 - 15.0
F1ERHM-40170	HP COLLETS - METRIC ER40 170	17.0 - 16.0
F1ERHM-40180	HP COLLETS - METRIC ER40 180	18.0 - 17.0
F1ERHM-40190	HP COLLETS - METRIC ER40 190	19.0 - 18.0
F1ERHM-40200	HP COLLETS - METRIC ER40 200	20.0 - 19.0
F1ERHM-40210	HP COLLETS - METRIC ER40 210	21.0 - 20.0
F1ERHM-40220	HP COLLETS - METRIC ER40 220	22.0 - 21.0
F1ERHM-40230	HP COLLETS - METRIC ER40 230	23.0 - 22.0
F1ERHM-40240	HP COLLETS - METRIC ER40 240	24.0 - 23.0
F1ERHM-40250	HP COLLETS - METRIC ER40 250	25.0 - 24
F1ERHM-40260	HP COLLETS - METRIC ER40 260	26.0 - 25.0
F1ERHM-40SET	HP COLLETS - METRIC ER40 SET	23 Pcs

ERN - Sealed Collets



Collets – ER16

Part No.	Product name	(D) RANGE
F1ERNM-16010	NC COLLETS - METRIC ER16 010	1
F1ERNM-16020	NC COLLETS - METRIC ER16 020	2
F1ERNM-16030	NC COLLETS - METRIC ER16 030	3
F1ERNM-16040	NC COLLETS - METRIC ER16 040	4
F1ERNM-16050	NC COLLETS - METRIC ER16 050	5
F1ERNM-16060	NC COLLETS - METRIC ER16 060	6
F1ERNM-16070	NC COLLETS - METRIC ER16 070	7
F1ERNM-16080	NC COLLETS - METRIC ER16 080	8
F1ERNM-16090	NC COLLETS - METRIC ER16 090	9
F1ERNM-16100	NC COLLETS - METRIC ER16 100	10

Collets – ER20

Part No.	Product name	(D) RANGE
F1ERNM-20020	NC COLLETS - METRIC ER20 020	2
F1ERNM-20030	NC COLLETS - METRIC ER20 030	3
F1ERNM-20040	NC COLLETS - METRIC ER20 040	4
F1ERNM-20050	NC COLLETS - METRIC ER20 050	5
F1ERNM-20060	NC COLLETS - METRIC ER20 060	6
F1ERNM-20070	NC COLLETS - METRIC ER20 070	7
F1ERNM-20080	NC COLLETS - METRIC ER20 080	8
F1ERNM-20090	NC COLLETS - METRIC ER20 090	9
F1ERNM-20100	NC COLLETS - METRIC ER20 100	10
F1ERNM-20110	NC COLLETS - METRIC ER20 110	11
F1ERNM-20120	NC COLLETS - METRIC ER20 120	12
F1ERNM-20130	NC COLLETS - METRIC ER20 130	13

ACCESSORIES

Collets – ER25

Part No.	Product name	(D) RANGE
F1ERNM-25020	NC COLLETS - METRIC ER25 020	2
F1ERNM-25030	NC COLLETS - METRIC ER25 030	3
F1ERNM-25040	NC COLLETS - METRIC ER25 040	4
F1ERNM-25050	NC COLLETS - METRIC ER25 050	5
F1ERNM-25060	NC COLLETS - METRIC ER25 060	6
F1ERNM-25070	NC COLLETS - METRIC ER25 070	7
F1ERNM-25080	NC COLLETS - METRIC ER25 080	8
F1ERNM-25090	NC COLLETS - METRIC ER25 090	9
F1ERNM-25100	NC COLLETS - METRIC ER25 100	10
F1ERNM-25110	NC COLLETS - METRIC ER25 110	11
F1ERNM-25120	NC COLLETS - METRIC ER25 120	12
F1ERNM-25130	NC COLLETS - METRIC ER25 130	13
F1ERNM-25140	NC COLLETS - METRIC ER25 140	14
F1ERNM-25150	NC COLLETS - METRIC ER25 150	15
F1ERNM-25160	NC COLLETS - METRIC ER25 160	16

Collets – ER32

Part No.	Product name	(D) RANGE
F1ERNM-32030	ER NC COLLETS - METRIC 32 030	3
F1ERNM-32040	ER NC COLLETS - METRIC 32 040	4
F1ERNM-32050	ER NC COLLETS - METRIC 32 050	5
F1ERNM-32060	ER NC COLLETS - METRIC 32 060	6
F1ERNM-32070	ER NC COLLETS - METRIC 32 070	7
F1ERNM-32080	ER NC COLLETS - METRIC 32 080	8
F1ERNM-32090	ER NC COLLETS - METRIC 32 090	9
F1ERNM-32100	ER NC COLLETS - METRIC 32 100	10
F1ERNM-32110	ER NC COLLETS - METRIC 32 110	11
F1ERNM-32120	ER NC COLLETS - METRIC 32 120	12
F1ERNM-32130	ER NC COLLETS - METRIC 32 130	13
F1ERNM-32140	ER NC COLLETS - METRIC 32 140	14
F1ERNM-32150	ER NC COLLETS - METRIC 32 150	15
F1ERNM-32160	ER NC COLLETS - METRIC 32 160	16
F1ERNM-32170	ER NC COLLETS - METRIC 32 170	17
F1ERNM-32180	ER NC COLLETS - METRIC 32 180	18
F1ERNM-32190	ER NC COLLETS - METRIC 32 190	19
F1ERNM-32200	ER NC COLLETS - METRIC 32 200	20

ACCESSORIES

Collets – ER40

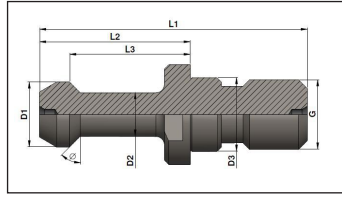
Part No.	Product name	(D) RANGE
F1ERNM-40040	NC COLLETS - METRIC ER40 040	4
F1ERNM-40050	NC COLLETS - METRIC ER40 050	5
F1ERNM-40060	NC COLLETS - METRIC ER40 060	6
F1ERNM-40070	NC COLLETS - METRIC ER40 070	7
F1ERNM-40080	NC COLLETS - METRIC ER40 080	8
F1ERNM-40090	NC COLLETS - METRIC ER40 090	9
F1ERNM-40100	NC COLLETS - METRIC ER40 100	10
F1ERNM-40110	NC COLLETS - METRIC ER40 110	11
F1ERNM-40120	NC COLLETS - METRIC ER40 120	12
F1ERNM-40130	NC COLLETS - METRIC ER40 130	13
F1ERNM-40140	NC COLLETS - METRIC ER40 140	14
F1ERNM-40150	NC COLLETS - METRIC ER40 150	15
F1ERNM-40160	NC COLLETS - METRIC ER40 160	16
F1ERNM-40170	NC COLLETS - METRIC ER40 170	17
F1ERNM-40180	NC COLLETS - METRIC ER40 180	18
F1ERNM-40190	NC COLLETS - METRIC ER40 190	19
F1ERNM-40200	NC COLLETS - METRIC ER40 200	20
F1ERNM-40210	NC COLLETS - METRIC ER40 210	21
F1ERNM-40220	NC COLLETS - METRIC ER40 220	22
F1ERNM-40230	NC COLLETS - METRIC ER40 230	23
F1ERNM-40240	NC COLLETS - METRIC ER40 240	24
F1ERNM-40250	NC COLLETS - METRIC ER40 250	25
F1ERNM-40260	NC COLLETS - METRIC ER40 260	26

Collets – ER50

Part No.	Product name	(D) RANGE
F1ERNM-50120	NC COLLETS - METRIC ER50 120	12
F1ERNM-50140	NC COLLETS - METRIC ER50 140	14
F1ERNM-50160	NC COLLETS - METRIC ER50 160	16
F1ERNM-50180	NC COLLETS - METRIC ER50 180	18
F1ERNM-50200	NC COLLETS - METRIC ER50 200	20
F1ERNM-50220	NC COLLETS - METRIC ER50 220	22
F1ERNM-50240	NC COLLETS - METRIC ER50 240	24
F1ERNM-50260	NC COLLETS - METRIC ER50 260	26
F1ERNM-50280	NC COLLETS - METRIC ER50 280	28
F1ERNM-50300	NC COLLETS - METRIC ER50 300	30
F1ERNM-50320	NC COLLETS - METRIC ER50 320	32
F1ERNM-50340	NC COLLETS - METRIC ER50 340	34

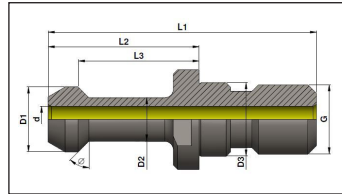
ACCESSORIES

MAS 403 BT



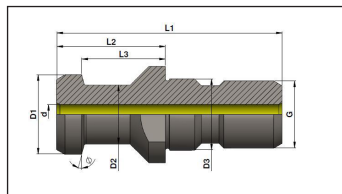
Part No.	Product name	Taper	D1	D2	L1	G	L2	Angle	D3	L3	Kgs	Group
F1PBM1-30301	BT PULL STUDS 30 30°	30	11	7	43	M12	23	30	12.5	18	0.03	A
F1PBM1-30451	BT PULL STUDS 30 45°	30	11	7	43	M12	23	45	12.5	18	0.03	A
F1PBM1-40002	BT PULL STUDS 40 0° S	40	15	10	50	M16	25	0	17	18	0.06	A
F1PBM1-40301	BT PULL STUDS 40 30°	40	15	10	60	M16	35	30	17	28	0.07	A
F1PBM1-40451	BT PULL STUDS 40 45°	40	15	10	60	M16	35	45	17	28	0.07	A
F1PBM1-40901	BT PULL STUDS 40 0°	40	15	10	60	M16	35	0	17	28	0.07	A
F1PBM1-50301	BT PULL STUDS 50 30°	50	23	17	85	M24	45	30	25	35	0.24	A
F1PBM1-50451	BT PULL STUDS 50 45°	50	23	17	85	M24	45	45	25	35	0.24	A
F1PBM1-50901	BT PULL STUDS 50 0°	50	23	17	85	M24	45	0	25	35	0.24	A
F1PBM1-50907	BT PULL STUDS 50 0° S	50	24	18	71	M24	31	0	25	21	0.22	A

MAS 403 BT with TC hole



Part No.	Product name	Taper	D1	D2	L1	G	L2	Angle	D3	d.	L3	Kgs	Group
F1PBM2-40301	BT PULL STUDS THRU CLNT 40 30°	40	15	10	60	M16	35	30	17	5	28	0.07	A
F1PBM2-40451	BT PULL STUDS THRU CLNT 40 45°	40	15	10	60	M16	35	45	17	4	28	0.07	A
F1PBM2-40901	BT PULL STUDS THRU CLNT 40 0°	40	15	10	60	M16	35	0	17	5	28	0.07	A
F1PBM2-50301	BT PULL STUDS THRU CLNT 50 30°	50	23	17	85	M24	45	30	25	9.5	35	0.24	A
F1PBM2-50451	BT PULL STUDS THRU CLNT 50 45°	50	23	17	85	M24	45	45	25	9.5	35	0.24	A
F1PBM2-50901	BT PULL STUDS THRU CLNT 50 0°	50	23	17	85	M24	45	0	25	9.5	35	0.24	A
F1PBM2-30301	BT PULL STUDS THRU CLNT 30 30°	30	11	7	43	M12	23	30	12.5	2	18	0.03	A
F1PBM2-30451	BT PULL STUDS THRU CLNT 30 45°	30	11	7	43	M12	23	45	12.5	2	18	0.03	A

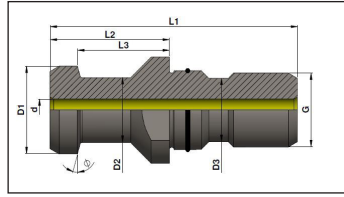
DIN 69872 A -WITH TC



Part No.	Product name	Taper	D1	D2	L1	G	L2	Angle	D3	L3	d.	Kgs	Group
F1PSM2-40151	DIN PULL STUDS THRU CLNT 40 15°	40	19	14	54	M16	26	15	17	20	7	0.07	A
F1PSM2-50151	DIN PULL STUDS THRU CLNT 50 15°	50	28	21	74	M24	34	15	25	25	11.5	0.21	A

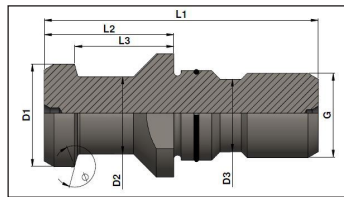
ACCESSORIES

DIN 69872 A -WITH TC O RING



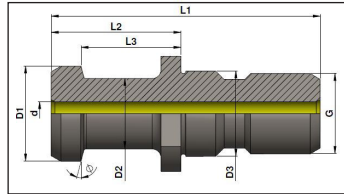
Part No.	Product name	Taper	D1	D2	L1	G	L2	Angle	D3	L3	d.	Kgs	Group
F1PSM7-40151	DIN PULL STUDS THRU CLNT WITH O Ring 40 15°	40	19	14	54	M16	26	15	17	20	7	0.07	A
F1PSM7-50151	DIN PULL STUDS THRU CLNT WITH O Ring 50 15°	50	28	21	74	M24	34	15	25	25	11.5	0.21	A

DIN 69872 B -WITH O RING WITHOUT TC



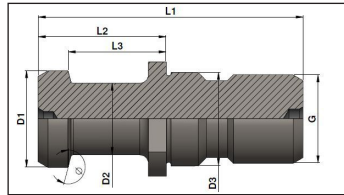
Part No.	Product name	Taper	D1	D2	L1	G	L2	Angle	D3	L3	Kgs	Group
F1PSM6-30151	DIN PULL STUDS WITH O Ring 30 15°	30	13	9	44	M12	24	15	13	19	0.04	A
F1PSM6-40151	DIN PULL STUDS WITH O Ring 40 15°	40	19	14	54	M16	26	15	17	20	0.07	A
F1PSM6-50151	DIN PULL STUDS WITH O Ring 50 15°	50	28	21	74	M24	34	15	25	25	0.21	A

JIS 6339 SIMILAR TO DIN 69872-A TC



Part No.	Product name	Taper	D1	D2	L1	G	L2	Angle	D3	d.	L3	Kgs	Group
F1PJM2-40151	JIS PULL STUDS THRU CLNT 40 15°	40	19	14	54	M16	29	15	17	7	23	0.07	A
F1PJM2-50151	JIS PULL STUDS THRU CLNT 50 15°	50	28	21	74	M24	34	15	25	11.5	25	0.19	A

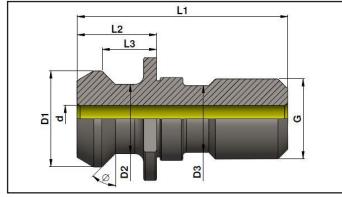
JIS 6339 SIMILAR TO DIN 69872-A



Part No.	Product name	Taper	D1	D2	L1	G	L2	Angle	D3	L3	Kgs	Group
F1PJM1-40151	JIS PULL STUDS 40 15°	40	19	14	54	M16	29	15	17	23	0.07	A
F1PJM1-50151	JIS PULL STUDS 50 15°	50	28	21	74	M24	34	15	25	25	0.19	A

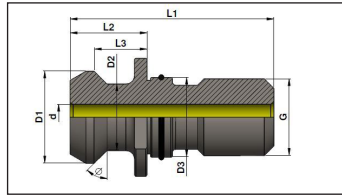
ACCESSORIES

ISO 7388 -WITH TC HOLE



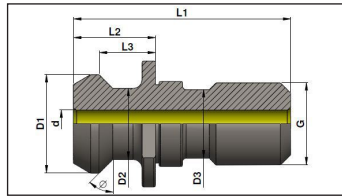
Part No.	Product name	Taper	D1	D2	L1	G	L2	Angle	D3	L3	d.	Kgs	Group
F1P7M2-40451	ISO 7388 PULL STUD THRU CLNT 40 45°	40	18.95	12.95	44.5	M16	16.4	45	17	11.15	7.35	0.06	A
F1P7M2-50451	ISO 7388 PULL STUD THRU CLNT 50 45°	50	29.1	19.6	65.5	M24	25.55	45	25	17.95	11.55	0.19	A

ISO 7388 WITH TC O RING



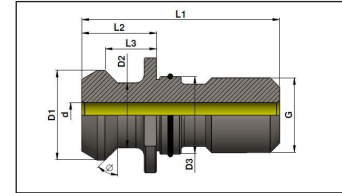
Part No.	Product name	Taper	D1	D2	L1	G	L2	Angle	D3	L3	d.	Kgs	Group
F1P7M7-40451	ISO 7388 PULL STUD THRU CLNT O RING 40 45°	40	18.95	12.95	44.5	M16	16.4	45	17	11.15	7.35	0.06	A
F1P7M7-50451	ISO 7388 PULL STUD THRU CLNT O RING 50 45°	50	29.1	19.6	65.5	M24	25.55	45	25	17.95	11.55	0.19	A

MAZAK WITH TC



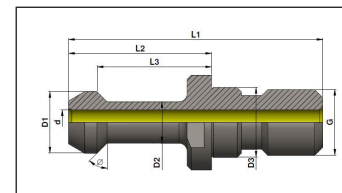
Part No.	Product name	Taper	D1	D2	L1	G	L2	Angle	D3	L3	d.	Kgs	Group
F1PMM2-40451	MAZAK PULL STUD THRU CLNT 40 45°	40	18.79	12.44	44.1	M16	19.1	45	17	14.026	7	0.05	A
F1PMM2-50451	MAZAK PULL STUD THRU CLNT 50 45°	50	28.95	20.82	65.2	M24	25.2	45	25	17.58	10	0.2	A

MAZAK WITH TC HOLE AND O RING



Part No.	Product name	Taper	D1	D2	L1	G	L2	Angle	D3	L3	d.	Kgs	Group
F1PMM7-40451	MAZAK PULL STUD THRU CLNT WITH O RING 40 45°	40	18.79	12.44	44.1	M16	19.1	45	17	14.026	7	0.05	A
F1PMM7-50451	MAZAK PULL STUD THRU CLNT WITH O RING 50 45°	50	28.95	20.82	65.2	M24	25.2	45	25	17.58	10	0.2	A

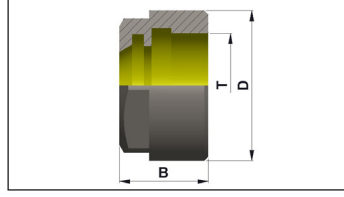
MAS 403 BT with TC hole (Brother M\C)



Part No.	Product name	Taper	D1	D2	L1	G	L2	Angle	D3	d.	L3	Kgs	Group
F1PBM1-30302	BT PULL STUDS 30 30° SPL48(Brother M\C)	30	11	7.5	43	M12	23	30	12.5	2	18	0.03	A

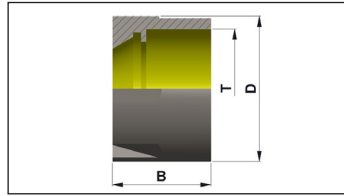
ACCESSORIES

Hexagonal Nut



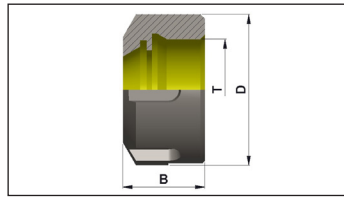
Part No.	Product name	D	B	T	Spanner	Kgs	Group
F15500-11ERX	NUT 11 ERH	19	11.3	M14X0.75	F155SP-11ERH	0.01	B
F15500-16ERX	NUT 16 ERH	28	17.5	M22X1.50	F155SP-16ERH	0.03	B

Mini Nut



Part No.	Product name	D	B	T	Spanner	Kgs	Group
F15500-16ERM	NUT 16 ERM	22	17.5	M19X1.00	F155SP-16ERM	0.02	B
F15500-20ERM	NUT 20 ERM	28	19.0	M24X1.00	F155SP-25ERM	0.03	B
F15500-25ERM	NUT 25 ERM	35	20.0	M30X1.00	F155SP-25ERM	0.05	B
F15500-11ERM	NUT 11 ERM	16	11.3	M13X0.75	F155SP-11ERM	0.01	B

Slotted Nut



Part No.	Product name	D	B	T	Spanner	Kgs	Group
F15500-20ERS	NUT 20 ERS	35	19.0	M25X1.50	F155SP-20ERS	0.07	B
F15500-25ERS	NUT 25 ERS	42	20.0	M32X1.50	F155SP-25ERS	0.09	B
F15500-32ERS	NUT 32 ERS	50	22.5	M40X1.50	F155SP-32ERS	0.14	B
F15500-40ERS	NUT 40 ERS	63	25.5	M50X1.50	F155SP-40ERS	0.26	B
F15500-50ERS	NUT 50 ERS	78	35.0	M64X2.00	F155SP-50ERS	0.49	B

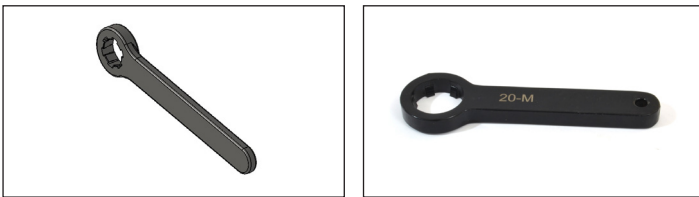
ACCESSORIES

Spanner For Hexagonal Nut



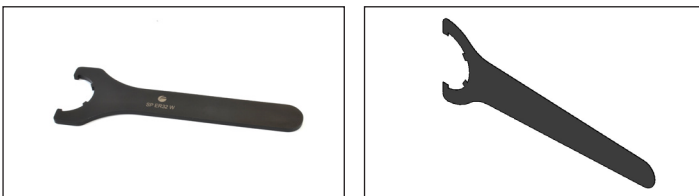
Part No.	Product name	Size	Kgs	Group
F155SP-11ERH	SPANNER ER 11 HEX	ER11	0.12	B
F15SP-16ERH	SPANNER ER 16 HEX	ER11	0.17	B

Spanner For Mini Nut



Part No.	Product name	Size	Kgs	Group
F155SP-20ERM	SPANNER ER20 MINI	ER20	0.18	B
F155SP-11ERM	SPANNER ER11 MINI	ER11	0.11	B
F155SP-16ERM	SPANNER ER16 MINI	ER16	0.13	B
F155SP-25ERM	SPANNER ER25 MINI	ER25	0.20	B

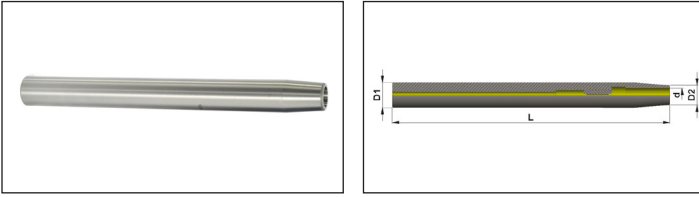
Spanner For Slotted Nut



Part No.	Product name	Size	Kgs	Group
F155SP-20ERS	SPANNER ER20	ER20	0.17	B
F155SP-25ERS	SPANNER ER25	ER25	0.23	B
F155SP-32ERS	SPANNER ER32	ER32	0.27	B
F155SP-40ERS	SPANNER ER40	ER40	0.31	B
F155SP-50ERS	SPANNER ER50	ER50	0.33	B

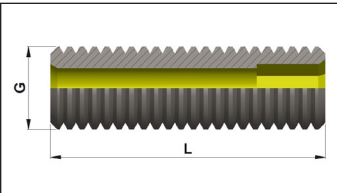
ACCESSORIES

Shrink Fit Extensions



Part No.	Product name	D1	L	D2	G	d.	Size	Kgs	Group
F1CY16X-SFC06150	CYS16 SHRINKFIT 06 150	16	150	10	M5	6	6	0.18	A
F1CY16X-SFC08150	CYS16 SHRINKFIT 08 150	16	150	14	M6	8	8	0.16	A
F1CY16X-SFC10150	CYS16 SHRINKFIT 10 150	16	150	14	M8X1P	10	10	0.14	A
F1CY20X-SFC06200	CYS20 SHRINKFIT 06 200	20	200	14	M5	6	6	0.41	A
F1CY20X-SFC08200	CYS20 SHRINKFIT 08 200	20	200	14	M6	8	8	0.38	A
F1CY20X-SFC10200	CYS20 SHRINKFIT 10 200	20	200	15	M8X1P	10	10	0.37	A
F1CY20X-SFC12200	CYS20 SHRINKFIT 12 200	20	200	16	M10X1P	12	12	0.35	A
F1CY25X-SFC06200	CYS25 SHRINKFIT 06 200	25	200	14	M5	6	6	0.5	A
F1CY25X-SFC08200	CYS25 SHRINKFIT 08 200	25	200	19	M6	8	8	0.64	A
F1CY25X-SFC10200	CYS25 SHRINKFIT 10 200	25	200	20	M8X1P	10	10	0.63	A
F1CY25X-SFC12200	CYS25 SHRINKFIT 12 200	25	200	20	M10X1P	12	12	0.62	A
F1CY25X-SFC14200	CYS25 SHRINKFIT 14 200	25	200	20	M10X1P	14	14	0.6	A
F1CY25X-SFC16200	CYS25 SHRINKFIT 16 200	25	200	22	M12X1P	16	16	0.59	A

Spares

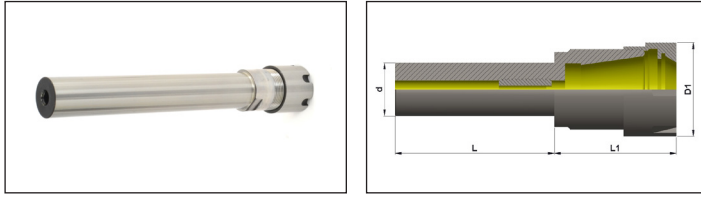


Part No.	L	G
F1SCWM-20M06	20	M6
F1SCWM-20M08	20	M8
F1SCWM-20M10	20	M10
F1SCWM-20M12	20	M12

ACCESSORIES

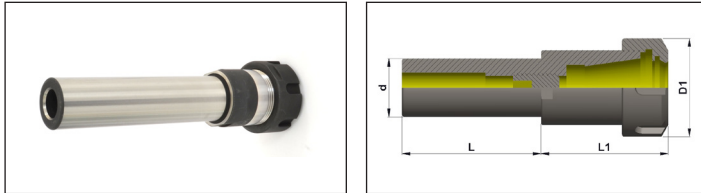
CYS
Cylindrical shank extensions-ERS

Cylindrical shank -ER Mini



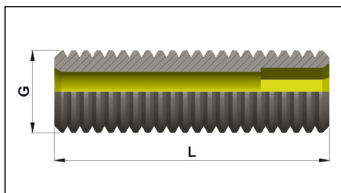
Part No.	Product name	D1	L	L1	G	d.	Size	Nut	Clamping range	Kgs	Group
F1CY12X-ERM11055	CYS12 ER MINI 11 055	16	55	30	-	12	ER11 M	F15500-11ERM	0.5 - 7.0	0.1	A
F1CY12X-ERM11100	CYS12 ER MINI 11 100	16	100	30	-	12	ER11 M	F15500-11ERM	0.5 - 7.0	0.90	A
F1CY16X-ERM11100	CYS16 ER MINI 11 100	16	100	22	M6	16	ER11 M	F15500-11ERM	0.5 - 7.0	0.15	A
F1CY16X-ERM16100	CYS16 ER MINI 16 100	22	100	40	M6	16	ER16 M	F15500-16ERM	0.5 - 10.0	0.2	A
F1CY16X-ERM16150	CYS16 ER MINI 16 150	22	150	40	M6	16	ER16 M	F15500-16ERM	0.5 - 10.0	0.26	A
F1CY16X-ERM16200	CYS16 ER MINI 16 200	22	200	40	M6	16	ER16 M	F15500-16ERM	0.5 - 10.0	0.34	A
F1CY20X-ERM20100	CYS20 ER MINI 20 100	28	100	42	M12	20	ER20 M	F15500-20ERM	1.0 - 13.0	0.4	A
F1CY20X-ERM20150	CYS20 ER MINI 20 150	28	150	42	M12	20	ER20 M	F15500-20ERM	1.0 - 13.0	0.44	A
F1CY20X-ERM20200	CYS20 ER MINI 20 200	28	200	42	M12	20	ER20 M	F15500-20ERM	1.0 - 13.0	0.53	A
F1CY25X-ERM25100	CYS25 ER MINI 25 100	35	100	32	M12	25	ER25 M	F15500-25ERM	1.0 - 16.0	0.5	A
F1CY25X-ERM25150	CYS25 ER MINI 25 150	35	150	32	M12	25	ER25 M	F15500-25ERM	1.0 - 16.0	0.65	A
F1CY25X-ERM25200	CYS25 ER MINI 25 200	35	200	32	M12	25	ER25 M	F15500-25ERM	1.0 - 16.0	0.81	A

Cylindrical shank -ER



Part No.	Product name	D1	L	L1	G	d.	Size	Nut	Clamping range	Kgs	Group
F1CY12X-ERS11100	CYS12 ER 11 100	19	100	30	-	12	ER11	F15500-11ERH	0.5 - 7.0	0.1	A
F1CY12X-ERS11150	CYS12 ER 11 150	19	150	30	-	12	ER11	F15500-11ERH	0.5 - 7.0	0.16	A
F1CY16X-ERS11150	CYS16 ER 11 150	19	150	30	-	16	ER11	F15500-11ERH	0.5 - 7.0	0.2	A
F1CY16X-ERS16060	CYS16 ER 16 060	28	60	45	M8	16	ER16	F15500-16ERH	0.5 - 10.0	0.2	A
F1CY16X-ERS16100	CYS16 ER 16 100	28	100	45	M8	16	ER16	F15500-16ERH	0.5 - 10.0	0.2	A
F1CY16X-ERS16150	CYS16 ER 16 150	28	150	45	M8	16	ER16	F15500-16ERH	0.5 - 10.0	0.3	A
F1CY20X-ERS20060	CYS20 ER 20 060	35	60	52	M8	20	ER20	F15500-20ERS	1.0 - 13.0	0.3	A
F1CY20X-ERS20100	CYS20 ER 20 100	35	100	52	M8	20	ER20	F15500-20ERS	1.0 - 13.0	0.3	A
F1CY20X-ERS20150	CYS20 ER 20 150	35	150	52	M8	20	ER20	F15500-20ERS	1.0 - 13.0	0.4	A
F1CY25X-ERS25060	CYS25 ER 25 060	42	60	55	M12	25	ER25	F15500-25ERS	1.0 - 16.0	0.5	A
F1CY25X-ERS25100	CYS25 ER 25 100	42	100	55	M12	25	ER25	F15500-25ERS	1.0 - 16.0	0.6	A
F1CY25X-ERS25200	CYS25 ER 25 200	42	200	55	M12	25	ER25	F15500-25ERS	1.0 - 16.0	0.81	A

Spares



Part No.	L	G
F1SCWM-20M06	20	M6
F1SCWM-20M08	20	M8
F1SCWM-20M10	20	M10
F1SCWM-20M12	20	M12

ACCESSORIES

Accessories



CYS
Cylindrical shank extensions - ERS

ACCESSORIES

MTA Type Collet Chucks

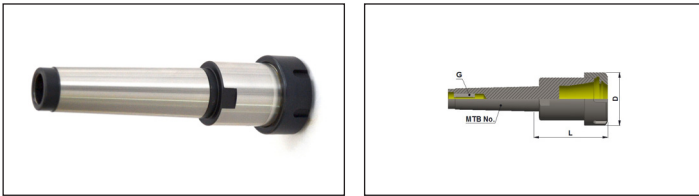
Morse Taper Collect Chuck – TANG



Part No.	Product name	D	L	Size	Nut	Clamping range	MT No.	Kgs	Group
F1MTA3X-ERS32070	MTA3 Tang type ER 32 070	50	70	ER32	F15500-32ERS	2.0 – 20.0	MT 3	0.8	A
F1MTA3X-ERS40075	MTA3 Tang type ER 40 075	63	75	ER40	F15500-40ERS	3.0 – 26.0	MT 3	1	A
F1MTA4X-ERS32075	MTA4 Tang type ER 32 075	50	75	ER32	F15500-32ERS	2.0 – 20.0	MT 4	1.1	A
F1MTA4X-ERS40075	MTA4 Tang type ER 40 075	63	75	ER40	F15500-40ERS	3.0 – 26.0	MT 4	1.3	A

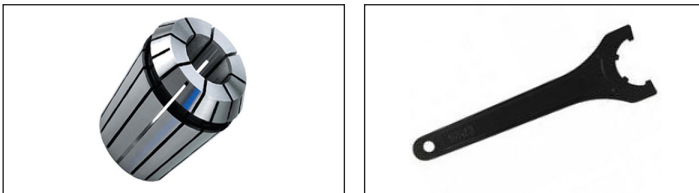
MTB Type Collet Chucks

Morse Taper Collect Chuck – THREADED



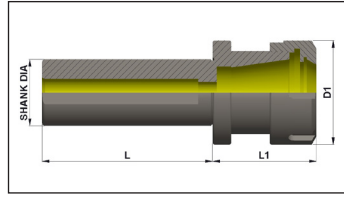
Part No.	Product name	D	L	G	Size	Nut	Clamping range	MT No.	Kgs	Group
F1MTB3X-ERS32070	MTB3 Threaded Type ER 32 070	50	70	M12	ER32	F15500-32ERS	2.0 – 20.0	MT 3	0.7	A
F1MTB3X-ERS40075	MTB3 Threaded Type ER 40 075	63	75	M12	ER40	F15500-40ERS	3.0 – 26.0	MT 3	0.9	A
F1MTB4X-ERS32075	MTB4 Threaded Type ER 32 075	50	75	M16	ER32	F15500-32ERS	2.0 – 20.0	MT 4	1	A
F1MTB4X-ERS40075	MTB4 Threaded Type ER 40 075	63	75	M16	ER40	F15500-40ERS	3.0 – 26.0	MT 4	1.3	A

Accessories



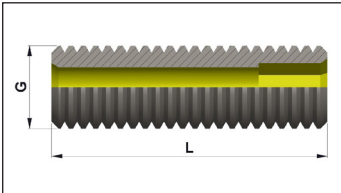
ACCESSORIES

CL - Collet Chucks - ER



Part No.	Product name	D1	L	L1	G	Size	Nut	Clamping range	Kgs	Group
F1CL32X-ERS25050	CL32 ER 25 050	42	82	50	M14X1.5	ER25	F15500-25ERS	1.0 – 16.0	0.7	A
F1CL32X-ERS32055	CL32 ER 32 055	50	82	55	M14X1.5	ER32	F15500-32ERS	2.0 – 20.0	0.8	A
F1CL32X-ERS40070	CL32 ER 40 070	63	82	70	M14X1.5	ER40	F15500-40ERS	3.0 – 26	1.2	A
F1CL40X-ERS25050	CL40 ER 25 050	42	85	50	M16X1.5	ER25	F15500-25ERS	1.0 – 16.0	1	A
F1CL40X-ERS32055	CL40 ER 32 055	50	85	55	M16X1.5	ER32	F15500-32ERS	2.0 – 20.0	1.1	A
F1CL40X-ERS40065	CL40 ER 40 065	63	85	65	M16X1.5	ER40	F15500-40ERS	3.0 – 26.0	1.3	A
F1CL50X-ERS25050	CL50 ER 25 050	42	90	50	M18X1.5	ER25	F15500-25ERS	1.0 – 16.0	1.6	A
F1CL50X-ERS32055	CL50 ER 32 055	50	90	55	M22X1.5	ER32	F15500-32ERS	2.0 – 20.0	1.7	A
F1CL50X-ERS40060	CL50 ER 40 060	63	90	60	M22X1.5	ER40	F15500-40ERS	3.0 – 26.0	1.9	A

Spares



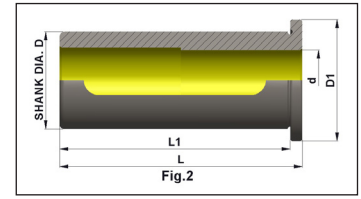
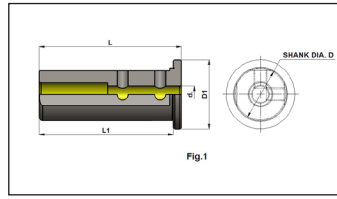
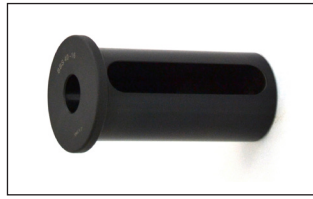
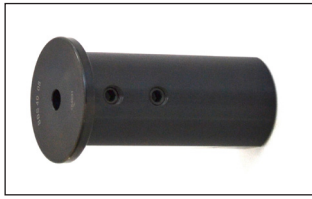
Part No.	L	G
F1SCWM-20M14	20	M14
F1SCWM-20M22	20	M22
F1SCWM-20M16	20	M16

Accessories



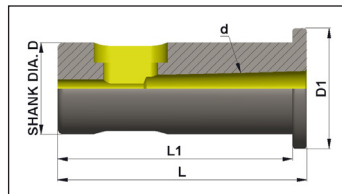
ACCESSORIES

Boring Bar Sleeve



Part No.	Product name	D1	L	L1	d.	D	FIG	Kgs	Group
F16100-25D08	Boring bar sleeve 25 D 08	35	70	65	8	25	1	0.2	A
F16100-25D10	Boring Bar Sleeve 25 D10	35	70	65	10	25	1	0.2	A
F16100-25D12	Boring Bar Sleeve 25 D12	35	70	65	12	25	1	0.2	A
F16100-25D16	Boring Bar Sleeve 25 D16	35	70	65	16	25	2	0.1	A
F16100-25D20	Boring Bar Sleeve 25 D20	35	70	65	20	25	2	0.1	A
F16100-32D08	Boring Bar Sleeve 32 D08	42	87	82	8	32	1	0.4	A
F16100-32D10	Boring Bar Sleeve 32 D10	42	87	82	10	32	1	0.5	A
F16100-32D12	Boring Bar Sleeve 32 D12	42	87	82	12	32	1	0.5	A
F16100-32D16	Boring Bar Sleeve 32 D16	42	87	82	16	32	2	0.4	A
F16100-32D20	Boring Bar Sleeve 32 D20	42	87	82	20	32	2	0.3	A
F16100-32D25	Boring Bar Sleeve 32 D25	42	87	82	25	32	2	0.2	A
F16100-40D08	Boring Bar Sleeve 40 D08	50	90	85	8	40	1	0.8	A
F16100-40D10	Boring Bar Sleeve 40 D10	50	90	85	10	40	1	0.8	A
F16100-40D12	Boring Bar Sleeve 40 D12	50	90	85	12	40	1	0.8	A
F16100-40D16	Boring Bar Sleeve 40 D16	50	90	85	16	40	2	0.6	A
F16100-40D20	Boring Bar Sleeve 40 D20	50	90	85	20	40	2	0.6	A
F16100-40D25	Boring Bar Sleeve 40 D25	50	90	85	25	40	2	0.4	A
F16100-40D32	Boring Bar Sleeve 40 D32	50	90	85	32	40	2	0.3	A
F16100-50D08	Boring Bar Sleeve 50 D08	60	95	90	8	50	1	1.4	A
F16100-50D10	Boring Bar Sleeve 50 D10	60	95	90	10	50	1	1.4	A
F16100-50D12	Boring Bar Sleeve 50 D12	60	95	90	12	50	1	1.3	A
F16100-50D16	Boring Bar Sleeve 50 D16	60	95	90	16	50	2	1.2	A
F16100-50D20	Boring Bar Sleeve 50 D20	60	95	90	20	50	2	1.1	A
F16100-50D25	Boring Bar Sleeve 50 D25	60	95	90	25	50	2	1	A
F16100-50D32	Boring Bar Sleeve 50 D32	60	95	90	32	50	2	0.8	A
F16100-50D40	Boring Bar Sleeve 50 D40	60	95	90	40	50	2	0.5	A

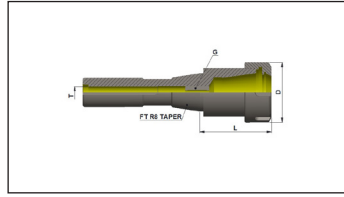
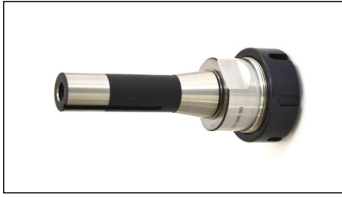
Boring Bar Sleeve MT



Part No.	Product name	d.	D	D1	L1	L	Kgs	Group
F16100-25MT1	Boring Bar Sleeve 25 MT1	MT1	25	35	65	76	0.20	A
F16100-32MT1	Boring Bar Sleeve 32 MT1	MT1	32	42	82	87	0.50	A
F16100-32MT2	Boring Bar Sleeve 32 MT2	MT2	32	42	82	89	0.40	A
F16100-32MT3	Boring Bar Sleeve 32 MT3	MT3	32	42	82	110	0.40	A
F16100-40MT1	Boring Bar Sleeve 40 MT1	MT1	40	50	85	90	0.80	A
F16100-40MT2	Boring Bar Sleeve 40 MT2	MT2	40	50	85	90	0.70	A
F16100-40MT3	Boring Bar Sleeve 40 MT3	MT3	40	50	85	110	0.80	A
F16100-50MT1	Boring Bar Sleeve 50 MT1	MT1	50	60	90	95	1.30	A
F16100-50MT2	Boring Bar Sleeve 50 MT2	MT2	50	60	90	95	1.30	A
F16100-50MT3	Boring Bar Sleeve 50 MT3	MT3	50	60	90	110	1.40	A
F16100-25MT2	Boring Bar Sleeve 25 MT2	MT2	25	35	65	89	0.20	A

ACCESSORIES

R8 Collet Chucks



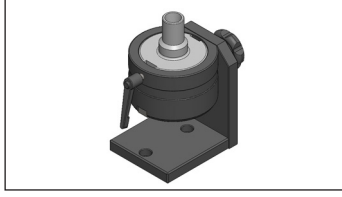
Part No.	Product name	D	L	G	Size	Clamping range	Nut	T	Kgs	Group
F12211X-ERS32060	R8(M12) ER 32 060	50	60	M12	ER32	2.0 - 20.0	F15500-32ERS	M12	0.7	B
F12211X-ERS40070	R8(M12) ER 40 070	63	70	M12	ER40	3.0 - 26.0	F15500-40ERS	M12	1.1	B

Accessories



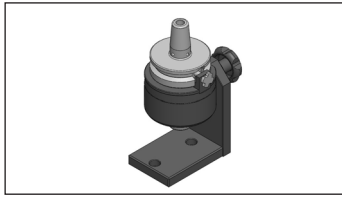
ACCESSORIES

Tool Clamping Device HSK



Part No.	Product name	Size	Kgs	Group
F155TB-10HSK	TOOL BOY HSK 100	HSK100	9.5	D
F155TB-50HSK	TOOL BOY HSK 50	HSK50	4	D
F155TB-63HSK	TOOL BOY HSK 63	HSK63	5	D

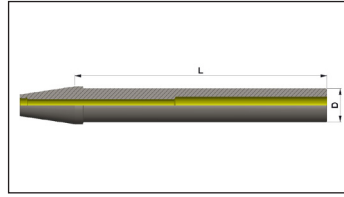
Tool Clamping Device ISO



Part No.	Product name	Size	Kgs	Group
F155TB-30ISO	TOOL BOY ISO 30	ISO30	3.5	B
F155TB-40ISO	TOOL BOY ISO 40	ISO40	5	B
F155TB-50ISO	TOOL BOY ISO 50	ISO50	8	B

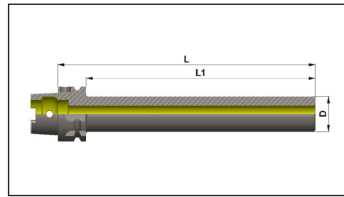
ACCESSORIES

Test Bars – ISO Taper



Part No.	Product name	L	Size	D	Kgs	Group
F166TS-30ISO	TEST BAR 30 ISO	300	ISO30	30	0.9	D
F166TS-40ISO	TEST BAR 40 ISO	300	ISO40	40	1.9	D
F166TS-50ISO	TEST BAR 50 ISO	300	ISO50	50	5.6	D

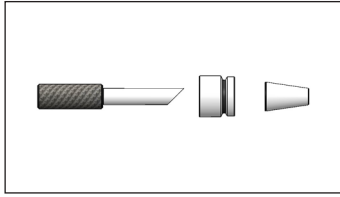
Test Bars - HSK Taper



Part No.	Product name	L	L1	D	Size	Kgs	Group
F166TS-50HSK	TEST BAR HSK A50	236	210	50	A50	1.4	D
F166TS-63HSK	TEST BAR HSK A63	346	320	63	A63	3.2	D
F166TS-10HSK	TEST BAR HSK A100	349	320	100	A100	4.6	D

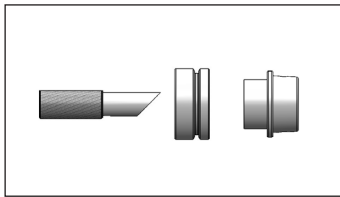
ACCESSORIES

ATC "0" Setting - ISO



Part No.	Product name	Size	Kgs	Group
F1B401-66ATC	BT 40 AD ZERO SETTING TOOL	BT40	2.6	D
F1B501-66ATC	BT 50 AD ZERO SETTING TOOL	BT50	4.5	D
F1S401-66ATC	SK 40 AD ZERO SETTING TOOL	SK40	2.6	D

ATC "0" Setting - HSK



Part No.	Product name	Size	Kgs	Group
F1A050-66ATC	HSK A50 ATC ZERO SETTING TOOL	HSK A50	2.0	D
F1A063-66ATC	HSK A63 ATC ZERO SETTING TOOL	HSK A63	3.0	D
F1A100-66ATC	HSK A100 ATC ZERO SETTING TOOL	HSK A100	4.9	D

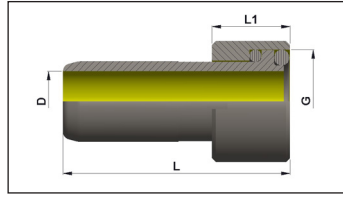
Drill Chucks



Part No.	Product name	Size	Kgs	Group
F1KDCH-06JTA	DRILL CHUCK 06 JTA	JTA6	0.074	D
F1KDCH-16DCB	DRILL CHUCK B 16	B16	0.074	D

ACCESSORIES

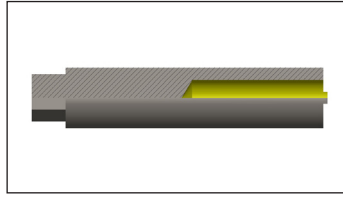
HSK -A



Part No.	Product name	L	L1	G	D	Group
F1CTUB-50HSK	Coolant tube HSK A50	33	9.5	M16X1	Ø10	A
F1CTUB-63HSK	Coolant tube HSK A63	36.5	11.5	M18X1	Ø12	A
F1CTUB-10HSK	Coolant tube HSK A100	44	15.5	M24X1.5	Ø16	A

ACCESSORIES

HSK -A



Part No.	Product name	Size	Kgs	Group
F1SPCT-50HSK	COOLANT TUBE SPANNER HSKA50	HSK A50	0.13	B
F1SPCT-63HSK	COOLANT TUBE SPANNER HSK A63	HSK A63	0.14	B
F1SPCT-10HSK	COOLANT TUBE SPANNER HSK A100	HSK A100	0.26	B



Falcon®

Falcon Toolings

SF. No. 205 / 1 & 2, Kalapatti, Coimbatore - 641 048, India

Ph : +91 (422) 266 6156 , +91 (422) 266 6322

Email : sales@falcontoolings.com

Web: www.falcontoolings.com