



# TAPPING CHUCKS



# 2022 Catalog

World-class products

Precise quality

Satisfied customer

TÜV SÜD TÜV SÜD TÜV SÜD TÜV SÜD TÜV SÜD TÜV SÜD TÜV SÜD TÜV SÜD TÜV SÜD TÜV SÜD TÜV SÜD TÜV SÜD TÜV SÜD TÜV SÜD TÜV SÜD TÜV SÜD TÜV SÜD TÜV SÜD TÜV SÜD TÜV SÜD

ZERTIFIKAT ♦ CERTIFICATE ♦ CERTIFICADO ♦ CERTIFICAT

TÜV SÜD SOUTH ASIA PRIVATE LIMITED

# CERTIFICATE

The Certification Body  
of TÜV SÜD South Asia Private Limited

certifies that

  
**Falcon Toolings**  
SF No -205/1 & 2, Kuttai Thottam, Kalapatti post  
Coimbatore - 641 048, Tamil Nadu, INDIA

has implemented a Quality Management System  
in accordance with ISO 9001:2015  
For Scope of

**Design, Development, Manufacturing & Supply of Toolings**

The certificate is valid in conjunction  
with the main certificate From 2021-01-20 until 2024-01-19  
Subject to successful completion of annual periodic audits  
The present status of this Certificate can be obtained on [www.tuv-sud.com/in](http://www.tuv-sud.com/in)  
Further clarifications regarding the scope of this certificate may be obtained by consulting the certification body

Certificate Registration No. **99 100 10587/01**  
Date of Initial certification : 2015-01-20

  
Rahul Kale  
Head of Certification Body  
of TÜV SÜD South Asia Private Limited, Mumbai  
Member of TÜV SÜD Group


TÜV SÜD South Asia Pvt. Ltd. • TÜV SÜD House • Saki Naka • Andheri (East) • Mumbai - 400072 • Maharashtra • India TÜV®

# TAPPING CHUCKS

## Table of contents

| Description   | Page |
|---|------|
| <b>WFLK - Tapping Chucks</b>                          |      |
| <b>BT (DIN ISO 7388-2) (MAS 403)</b> .....            | 5    |
| BT30 Tapping Chucks .....                             | 5    |
| BT40 Tapping Chucks .....                             | 5    |
| BT50 Tapping Chucks .....                             | 5    |
| <b>SK (DIN ISO 7388-1) (DIN 69871)</b> .....          | 6    |
| SK30 Tapping chucks.....                              | 6    |
| SK40 Tapping Chucks.....                              | 6    |
| SK50 Tapping Chucks.....                              | 6    |
| <b>HSK (DIN 69893)</b> .....                          | 7    |
| HSK A50 Tapping Chucks .....                          | 7    |
| HSK A63 Tapping Chucks .....                          | 7    |
| HSK A100 Tapping Chucks .....                         | 7    |
| <b>PARALLEL SHANK (DIN1835 B+E)</b> .....             | 8    |
| PARALLEL SHANK - Tapping chucks .....                 | 8    |
| <b>VDI (DIN69880)</b> .....                           | 8    |
| VDI SHANK - Tapping Chucks .....                      | 8    |
| <br>  |      |
| <b>WES1B - Quick Change Tap Adaptor With Clutch</b>   |      |
| WES1B - Tap adaptor with clutch.....                  | 9    |
| <br>  |      |
| <b>WES2B - Quick Change Tap Adaptor With Clutch</b>   |      |
| WES2B - Tap adaptor with clutch.....                  | 10   |
| <br>  |      |
| <b>WE1B - Quick Change Tap Adaptor Without Clutch</b> |      |
| WE1B - Tap adaptor without clutch .....               | 11   |
| <br>  |      |
| <b>WE2B - Quick Change Tap Adaptor Without Clutch</b> |      |
| WE2B - Tap adaptor without clutch .....               | 12   |
| <br>  |      |
| <b>TAPSHK - Tap Shank Dimensions</b>                  |      |
| TAP SHANK DIMENSIONS TO - ISO / DIN / JIS.....        | 13   |
| <br>  |      |
| <b>STC - Synchro Chucks</b>                           |      |
| <b>BT (DIN ISO 7388-2) (MAS 403)</b> .....            | 15   |
| BT40 - synchro chucks.....                            | 15   |
| BT50 - Synchro chucks .....                           | 15   |
| <b>SK (DIN ISO 7388-1) (DIN 69871)</b> .....          | 16   |
| SK40 - Synchro chucks.....                            | 16   |
| SK50 - Synchro chucks .....                           | 16   |
| <b>HSK (DIN 69893)</b> .....                          | 17   |
| HSK A63 - Synchro chucks .....                        | 17   |
| HSK A100 - Synchro chucks .....                       | 17   |
| <b>PARALLEL SHANK (DIN1835 B+E)</b> .....             | 18   |
| PARALLEL SHANK - Synchro chucks.....                  | 18   |

# TAPPING CHUCKS

\*Falcon quick change tapping chucks type WFLK are mainly used in CNC milling, CNC lathe and in conventional drilling machine.

\*This quick change feature with length compensation is suitable for various adaptors

\*Length compensating quick-change holders available with tension/compression feature that compensates for differences between tap pitch and machine feed.

\*These chucks can be applied vertically & horizontally.

\*These chucks can be used for doing right & left hand threads.

\*The chucks cutting pressure can be adjusted to ensure positive start while starting tapping cycle.

\*These chucks are available in

\*BT(MAS 403)

\*SK(DIN69871)

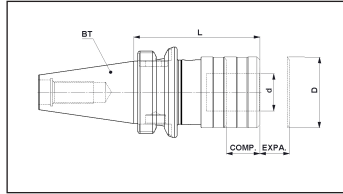
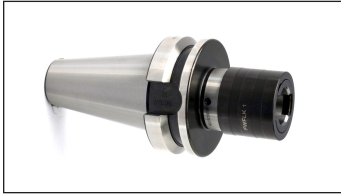
\*HSK A(69893)

\*PARALLEL SHANKS (DIN1835 FORM-B & FORM-E).

# TAPPING CHUCKS

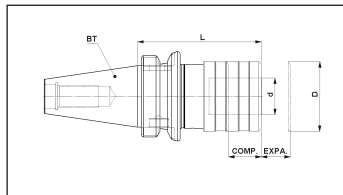
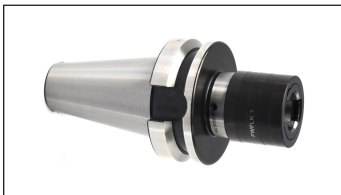
## BT (DIN ISO 7388-2) (MAS 403)

### BT30 Tapping Chucks



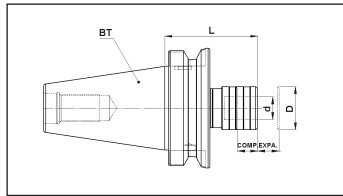
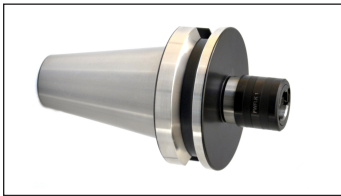
| Part No.         | Product name                      | Taper | D  | d. | L  | Tap Size | Compression | Expansion | Adaptor Model | Kgs  | Group |
|------------------|-----------------------------------|-------|----|----|----|----------|-------------|-----------|---------------|------|-------|
| F1B301X-WFLK1064 | BT30 TAPPING CHUCK WFLK SIZE1 064 | 30    | 36 | 19 | 64 | M3 - M12 | 7.5         | 7.5       | WE1 / WES1B   | 0.57 | B7000 |

### BT40 Tapping Chucks



| Part No.         | Product name                      | Taper | D  | d. | L    | Tap Size | Compression | Expansion | Adaptor Model | Kgs  | Group |
|------------------|-----------------------------------|-------|----|----|------|----------|-------------|-----------|---------------|------|-------|
| F1B401X-WFLK1068 | BT40 TAPPING CHUCK WFLK SIZE1 068 | 40    | 36 | 19 | 67.5 | M3 - M12 | 7.5         | 7.5       | WE1 / WES1B   | 1.16 | B7000 |
| F1B401X-WFLK2095 | BT40 TAPPING CHUCK WFLK SIZE2 095 | 40    | 53 | 31 | 94.5 | M5 - M20 | 12.5        | 12.5      | WE2 / WES2B   | 1.61 | B7000 |

### BT50 Tapping Chucks

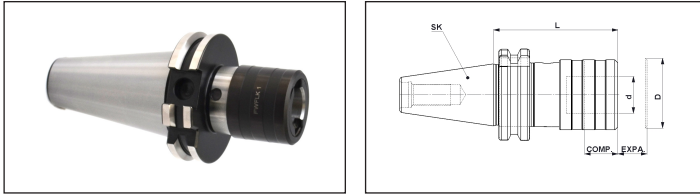


| Part No.         | Product name                      | Taper | D  | d. | L     | Tap Size | Compression | Expansion | Adaptor Model | Kgs  | Group |
|------------------|-----------------------------------|-------|----|----|-------|----------|-------------|-----------|---------------|------|-------|
| F1B501X-WFLK1078 | BT50 TAPPING CHUCK WFLK SIZE1 078 | 50    | 36 | 19 | 78    | M3 - M12 | 7.5         | 7.5       | WE1 / WES1B   | 3.77 | B7000 |
| F1B501X-WFLK2103 | BT50 TAPPING CHUCK WFLK SIZE2 103 | 50    | 53 | 31 | 102.5 | M5 - M20 | 12.5        | 12.5      | WE2 / WES2B   | 4.08 | B7000 |

# TAPPING CHUCKS

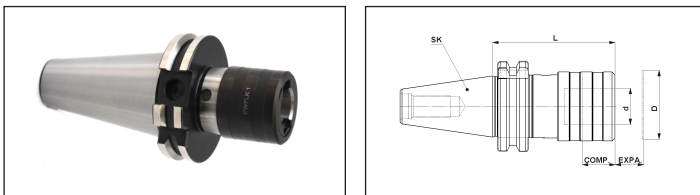
## SK (DIN ISO 7388-1) (DIN 69871)

### SK30 Tapping chucks



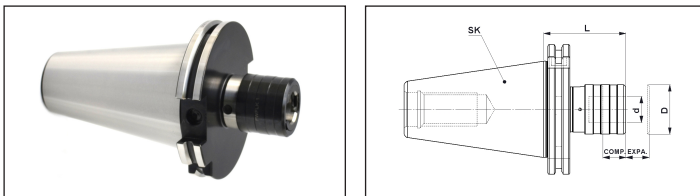
| Part No.         | Product name                      | Taper | D  | d. | L  | Tap Size | Compression | Expansion | Adaptor Model | Kgs  | Group |
|------------------|-----------------------------------|-------|----|----|----|----------|-------------|-----------|---------------|------|-------|
| F1S301X-WFLK1064 | SK30 TAPPING CHUCK WFLK SIZE1 064 | 30    | 36 | 19 | 64 | M3 - M12 | 7.5         | 7.5       | WE1 / WES1B   | 0.58 | B7000 |

### SK40 Tapping Chucks



| Part No.         | Product name                      | Taper | D  | d. | L  | Tap Size | Compression | Expansion | Adaptor Model | Kgs  | Group |
|------------------|-----------------------------------|-------|----|----|----|----------|-------------|-----------|---------------|------|-------|
| F1S401X-WFLK1060 | SK40 TAPPING CHUCK WFLK SIZE1 060 | 40    | 36 | 19 | 60 | M3 - M12 | 7.5         | 7.5       | WE1 / WES1B   | 1.0  | B7000 |
| F1S401X-WFLK2098 | SK40 TAPPING CHUCK WFLK SIZE2 098 | 40    | 53 | 31 | 98 | M5 - M20 | 12.5        | 12.5      | WE2 / WES2B   | 1.45 | B7000 |

### SK50 Tapping Chucks

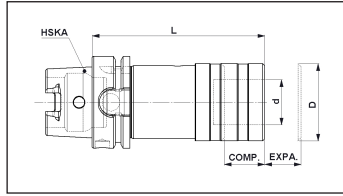


| Part No.         | Product name                      | Taper | D  | d. | L  | Tap Size | Compression | Expansion | Adaptor Model | Kgs  | Group |
|------------------|-----------------------------------|-------|----|----|----|----------|-------------|-----------|---------------|------|-------|
| F1S501X-WFLK1060 | SK50 TAPPING CHUCK WFLK SIZE1 060 | 50    | 36 | 19 | 60 | M3 - M12 | 7.5         | 7.5       | WE1 / WES1B   | 2.82 | B7000 |
| F1S501X-WFLK2084 | SK50 TAPPING CHUCK WFLK SIZE2 084 | 50    | 53 | 31 | 84 | M5 - M20 | 12.5        | 12.5      | WE2 / WES2B   | 3.24 | B7000 |

# TAPPING CHUCKS

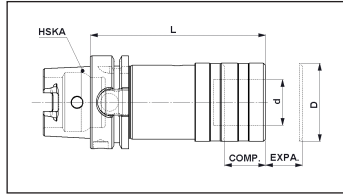
## HSK (DIN 69893)

### HSK A50 Tapping Chucks



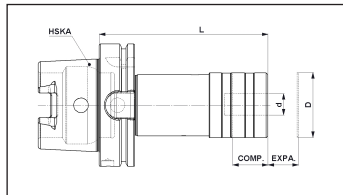
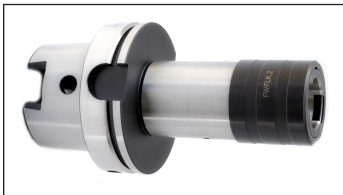
| Part No.         | Product name                         | Taper | D  | d. | L   | Tap Size | Compression | Expansion | Adaptor Model | Kgs  | Group |
|------------------|--------------------------------------|-------|----|----|-----|----------|-------------|-----------|---------------|------|-------|
| F1A050X-WFLK1076 | HSK A50 TAPPING CHUCK WFLK SIZE1 081 | A50   | 36 | 19 | 76  | M3 – M12 | 7.5         | 7.5       | WE1 / WES1B   | 0.62 | B7000 |
| F1A050X-WFLK2123 | HSK A50 TAPPING CHUCK WFLK SIZE2 123 | A50   | 53 | 31 | 123 | M5 – M20 | 12.5        | 12.5      | WE2 / WES2B   | 0.93 | B7000 |

### HSK A63 Tapping Chucks



| Part No.         | Product name                         | Taper | D  | d. | L   | Tap Size | Compression | Expansion | Adaptor Model | Kgs  | Group |
|------------------|--------------------------------------|-------|----|----|-----|----------|-------------|-----------|---------------|------|-------|
| F1A063X-WFLK1081 | HSK A63 TAPPING CHUCK WFLK SIZE1 081 | A63   | 36 | 19 | 81  | M3 – M12 | 7.5         | 7.5       | WE1 / WES1B   | 1.12 | B7000 |
| F1A063X-WFLK2119 | HSK A63 TAPPING CHUCK WFLK SIZE2 119 | A63   | 53 | 31 | 119 | M5 – M20 | 12.5        | 12.5      | WE2 / WES2B   | 1.40 | B7000 |

### HSK A100 Tapping Chucks

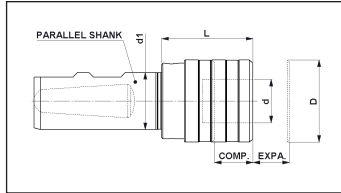


| Part No.         | Product name                          | Taper | D  | d. | L   | Tap Size | Compression | Expansion | Adaptor Model | Kgs  | Group |
|------------------|---------------------------------------|-------|----|----|-----|----------|-------------|-----------|---------------|------|-------|
| F1A100X-WFLK1090 | HSK A100 TAPPING CHUCK WFLK SIZE1 090 | A100  | 36 | 19 | 90  | M3 – M12 | 7.5         | 7.5       | WE1 / WES1B   | 2.56 | B7000 |
| F1A100X-WFLK2138 | HSK A100 TAPPING CHUCK WFLK SIZE2 138 | A100  | 53 | 31 | 138 | M5 – M20 | 12.5        | 12.5      | WE2 / WES2B   | 3.45 | B7000 |

# TAPPING CHUCKS

## PARALLEL SHANK (DIN1835 B+E)

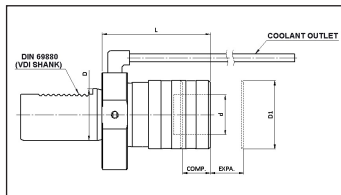
### PARALLEL SHANK - Tapping chucks



| Part No.         | Product name                                   | D1 | D  | d. | L  | Tap Size | Compression | Expansion | Adaptor Model | Kgs  | Group |
|------------------|--|----|----|----|----|----------|-------------|-----------|---------------|------|-------|
| F1PS25X-WFLK1040 | PARALLEL SHANK25 TAPPING CHUCK WFLK SIZE1 040  | 25 | 36 | 19 | 40 | M3 - M12 | 7.5         | 7.5       | WE1 / WES1B   | 0.5  | B7000 |
| F1PS25X-WFLK2063 | PARALLEL SHANK25 TAPPING CHUCK WFLK SIZE2 063  | 25 | 53 | 31 | 63 | M5 - M20 | 12.5        | 12.5      | WE2 / WES2B   | 0.9  | B7000 |
| F1PS32X-WFLK1040 | PARALLEL SHANK32 TAPPING CHUCK WFLK SIZE1 040  | 32 | 36 | 19 | 40 | M3 - M12 | 7.5         | 7.5       | WE1 / WES1B   | 0.90 | B7000 |
| F1PS32X-WFLK2063 | PARALLEL SHANK32 TAPPING CHUCK WFLK SIZE 2 063 | 32 | 53 | 31 | 63 | M5 - M20 | 12.5        | 12.5      | WE2 / WES2B   | 0.98 | B7000 |
| F1PS40X-WFLK1040 | PARALLEL SHANK40 TAPPING CHUCK WFLK SIZE2 063  | 40 | 36 | 19 | 40 | M3-M12   | 7.5         | 7.5       | WE1 / WES1B   | 0.87 | B7000 |
| F1PS40X-WFLK2063 | PARALLEL SHANK40 TAPPING CHUCK WFLK SIZE2 063  | 40 | 53 | 31 | 63 | M5 - M20 | 12.5        | 12.5      | WE2 / WES2B   | 1.0  | B7000 |

## VDI (DIN69880)

### VDI SHANK - Tapping Chucks

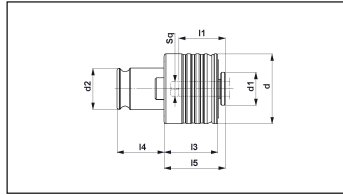
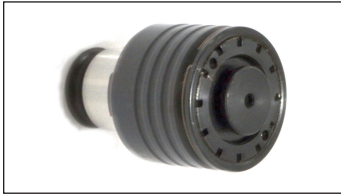


| Part No.         | Product name                       | D     | d. | D1 | L    | Tap Size | Compression | Expansion | Adaptor Model | Kgs  | Group |
|------------------|------------------------------------|-------|----|----|------|----------|-------------|-----------|---------------|------|-------|
| F1VD30X-WFLK1062 | VDI30 TAPPING CHUCK WFLK SIZE1 062 | VDI30 | 19 | 36 | 61.5 | M3-M12   | 7.5         | 7.5       | WE1 / WES1B   | 1.20 | B7000 |
| F1VD30X-WFLK2084 | VDI30 TAPPING CHUCK WFLK SIZE2 084 | VDI30 | 31 | 53 | 84   | M5-M20   | 7.5         | 7.5       | WE2 / WES2B   | 1.23 | B7000 |
| F1VD40X-WFLK1062 | VDI40 TAPPING CHUCK WFLK SIZE1 062 | VDI40 | 19 | 36 | 61.5 | M3-M12   | 7.5         | 7.5       | WE1B / WES1B  | 1.52 | B7000 |
| F1VD40X-WFLK2084 | VDI40 TAPPING CHUCK WFLK SIZE2 084 | VDI40 | 31 | 53 | 84   | M5-M20   | 7.5         | 7.5       | WE2B / WES2B  | 1.81 | B7000 |
| F1VD50X-WFLK1062 | VDI50 TAPPING CHUCK WFLK SIZE1 062 | VDI50 | 19 | 36 | 61.5 | M3-M12   | 7.5         | 7.5       | WE1B / WES1B  | 2.10 | B7000 |
| F1VD50X-WFLK2080 | VDI50 TAPPING CHUCK WFLK SIZE2 080 | VDI50 | 31 | 53 | 80   | M5-M20   | 7.5         | 7.5       | WE2B / WES2B  | 2.32 | B7000 |



# TAPPING CHUCKS

## WES1B - Tap adaptor with clutch



| ADAPTOR TYPE | TAP RANGE | d  | d1   | d2 | l1 | l3   | l4   | l5 |
|--------------|-----------|----|------|----|----|------|------|----|
| FWES 1B      | M3-M12    | 32 | 18.4 | 19 | 17 | 24.5 | 21.5 | 25 |

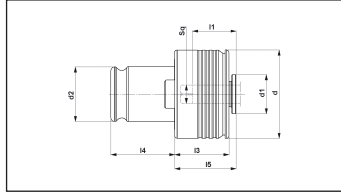
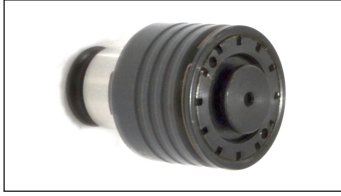
| Part No.     | Product name                             | DIA  | SQ   | Tap Size | Kgs  | Group |
|--------------|--|------|------|----------|------|-------|
| F18822-77101 | WES1B TAP ADAPTOR DIA 2.5 X SQ 2.1 M1.8  | 2.5  | 2.1  | M1.8     | 0.15 | B7000 |
| F18822-77102 | WES1B TAP ADAPTOR DIA 2.5 X SQ 2.1 M2    | 2.5  | 2.1  | M2       | 0.15 | B7000 |
| F18822-77103 | WES1B TAP ADAPTOR DIA 2.8 X SQ 2.1 M2    | 2.8  | 2.1  | M2       | 0.15 | B7000 |
| F18822-77104 | WES1B TAP ADAPTOR DIA 2.8 X SQ 2.1 M3    | 2.8  | 2.1  | M3       | 0.15 | B7000 |
| F18822-77105 | WES1B TAP ADAPTOR DIA 3.15 X SQ 2.5 M3   | 3.15 | 2.5  | M3       | 0.15 | B7000 |
| F18822-77106 | WES1B TAP ADAPTOR DIA 3.15 X SQ 2.5 M4   | 3.15 | 2.5  | M4       | 0.15 | B7000 |
| F18822-77107 | WES1B TAP ADAPTOR DIA 3.5 X SQ 2.7 M3    | 3.5  | 2.7  | M3       | 0.15 | B7000 |
| F18822-77108 | WES1B TAP ADAPTOR DIA 3.5 X SQ 2.7 M5    | 3.5  | 2.7  | M5       | 0.15 | B7000 |
| F18822-77109 | WES1B TAP ADAPTOR DIA 3.55 X SQ 2.8 M3.5 | 3.55 | 2.8  | M3.5     | 0.15 | B7000 |
| F18822-77110 | WES1B TAP ADAPTOR DIA 3.55 X SQ 2.8 M4.5 | 3.55 | 2.8  | M4.5     | 0.15 | B7000 |
| F18822-77111 | WES1B TAP ADAPTOR DIA 4.0 X SQ 3.0 M3    | 4.0  | 3.0  | M3       | 0.15 | B7000 |
| F18822-77112 | WES1B TAP ADAPTOR DIA 4.0 X SQ 3.0 M3.5  | 4.0  | 3.0  | M3.5     | 0.15 | B7000 |
| F18822-77113 | WES1B TAP ADAPTOR DIA 4.0 X SQ 3.0 M4    | 4.0  | 3.0  | M4       | 0.15 | B7000 |
| F18822-77114 | WES1B TAP ADAPTOR DIA 4.0 X SQ 3.15 M4   | 4.0  | 3.15 | M4       | 0.15 | B7000 |
| F18822-77115 | WES1B TAP ADAPTOR DIA 4.0 X SQ 3.15 M5   | 4.0  | 3.15 | M5       | 0.15 | B7000 |
| F18822-77116 | WES1B TAP ADAPTOR DIA 4.0 X SQ 3.2 M3    | 4.0  | 3.2  | M3       | 0.15 | B7000 |
| F18822-77117 | WES1B TAP ADAPTOR DIA 4.5 X SQ 3.4 M4    | 4.5  | 3.4  | M4       | 0.15 | B7000 |
| F18822-77118 | WES1B TAP ADAPTOR DIA 4.5 X SQ 3.4 M6    | 4.5  | 3.4  | M6       | 0.15 | B7000 |
| F18822-77119 | WES1B TAP ADAPTOR DIA 4.5 X SQ 3.55 M6   | 4.5  | 3.55 | M6       | 0.15 | B7000 |
| F18822-77120 | WES1B TAP ADAPTOR DIA 5.0 X SQ 4.0 M4    | 5.0  | 4.0  | M4       | 0.15 | B7000 |
| F18822-77121 | WES1B TAP ADAPTOR DIA 5.0 X SQ 4.0 M4.5  | 5.0  | 4.0  | M4.5     | 0.15 | B7000 |
| F18822-77122 | WES1B TAP ADAPTOR DIA 5.0 X SQ 4.0 M5    | 5.0  | 4.0  | M5       | 0.15 | B7000 |
| F18822-77123 | WES1B TAP ADAPTOR DIA 5.5 X SQ 4.5 M5    | 5.5  | 4.5  | M5       | 0.15 | B7000 |
| F18822-77124 | WES1B TAP ADAPTOR DIA 5.5 X SQ 4.5 M5.5  | 5.5  | 4.5  | M5.5     | 0.15 | B7000 |
| F18822-77125 | WES1B TAP ADAPTOR DIA 5.6 X SQ 4.5 M7    | 5.6  | 4.5  | M7       | 0.15 | B7000 |
| F18822-77126 | WES1B TAP ADAPTOR DIA 6.0 X SQ 4.5 M6    | 6.0  | 4.5  | M6       | 0.15 | B7000 |
| F18822-77127 | WES1B TAP ADAPTOR DIA 6.0 X SQ 4.9 M5    | 6.0  | 4.5  | M5       | 0.15 | B7000 |
| F18822-77128 | WES1B TAP ADAPTOR DIA 6.0 X SQ 4.9 M6    | 6.0  | 4.9  | M6       | 0.15 | B7000 |
| F18822-77129 | WES1B TAP ADAPTOR DIA 6.0 X SQ 4.9 M8    | 6.0  | 4.9  | M8       | 0.15 | B7000 |
| F18822-77132 | WES1B TAP ADAPTOR DIA 6.2 X SQ 5.0 M7    | 6.2  | 5.0  | M7       | 0.15 | B7000 |
| F18822-77133 | WES1B TAP ADAPTOR DIA 6.2 X SQ 5.0 M8    | 6.2  | 5.0  | M8       | 0.15 | B7000 |
| F18822-77134 | WES1B TAP ADAPTOR DIA 6.3 X SQ 5.0 M6    | 6.3  | 5.0  | M6       | 0.15 | B7000 |
| F18822-77135 | WES1B TAP ADAPTOR DIA 6.3 X SQ 5.0 M8    | 6.3  | 5.0  | M8       | 0.15 | B7000 |
| F18822-77136 | WES1B TAP ADAPTOR DIA 7.0 X SQ 5.5 M9    | 7.0  | 5.5  | M9       | 0.15 | B7000 |
| F18822-77137 | WES1B TAP ADAPTOR DIA 7.0 X SQ 5.5 M10   | 7.0  | 5.5  | M10      | 0.15 | B7000 |
| F18822-77138 | WES1B TAP ADAPTOR DIA 7.1 X SQ 5.6 M7    | 7.1  | 5.6  | M7       | 0.15 | B7000 |
| F18822-77139 | WES1B TAP ADAPTOR DIA 8.0 X SQ 6.0 M11   | 8.0  | 6.0  | M11      | 0.15 | B7000 |
| F18822-77140 | WES1B TAP ADAPTOR DIA 8.0 X SQ 6.2 M11   | 8.0  | 6.2  | M11      | 0.15 | B7000 |
| F18822-77141 | WES1B TAP ADAPTOR DIA 8.0 X SQ 6.2 M8    | 8.0  | 6.2  | M8       | 0.15 | B7000 |
| F18822-77142 | WES1B TAP ADAPTOR DIA 8.0 X SQ 6.3 M8    | 8.0  | 6.3  | M8       | 0.15 | B7000 |
| F18822-77143 | WES1B TAP ADAPTOR DIA 8.0 X SQ 6.3 M10   | 8.0  | 6.3  | M10      | 0.15 | B7000 |
| F18822-77144 | WES1B TAP ADAPTOR DIA 8.5 X SQ 6.5 M12   | 8.5  | 6.5  | M12      | 0.15 | B7000 |
| F18822-77145 | WES1B TAP ADAPTOR DIA 9.0 X SQ 7.0 M12   | 9.0  | 7.0  | M12      | 0.15 | B7000 |
| F18822-77146 | WES1B TAP ADAPTOR DIA 9.0 X SQ 7.1 M12   | 9.0  | 7.1  | M12      | 0.15 | B7000 |
| F18822-77147 | WES1B TAP ADAPTOR DIA 10 X SQ 8.0 M10    | 10.0 | 8.0  | M10      | 0.15 | B7000 |
| F18822-77148 | WES1B TAP ADAPTOR DIA 10.5 X SQ 8.0 M14  | 10.5 | 8.0  | M14      | 0.15 | B7000 |
| F18822-77149 | WES1B TAP ADAPTOR DIA 10.5 X SQ 8.0 M15  | 10.5 | 8.0  | M15      | 0.15 | B7000 |
| F18822-77150 | WES1B TAP ADAPTOR DIA 11.0 X SQ 9.0 M14  | 11.0 | 9.0  | M14      | 0.15 | B7000 |
| F18822-77151 | WES1B TAP ADAPTOR DIA 11.2 X SQ 9.0 M14  | 11.2 | 9.0  | M14      | 0.15 | B7000 |

WES1B Quick Change Tap Adaptor With Clutch

# TAPPING CHUCKS

WES2B Quick Change Tap Adaptor With Clutch

## WES2B - Tap adaptor with clutch

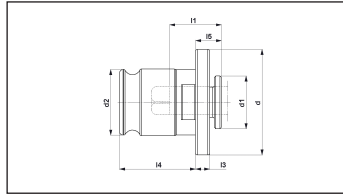
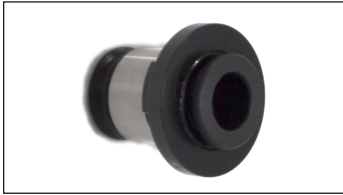


| ADAPTOR RANGE | TAP RANGE | d  | d1 | d2 | l1 | l3   | l4 | l5 |
|---------------|-----------|----|----|----|----|------|----|----|
| FWES 2B       | M5-M20    | 50 | 30 | 31 | 30 | 30.5 | 36 | 33 |

| Part No.     | Product name                             | DIA  | SQ   | Tap Size | Kgs  | Group |
|--------------|--|------|------|----------|------|-------|
| F18823-77127 | WES2B TAP ADAPTOR DIA 6.0 X SQ 4.9 M5    | 6.0  | 4.9  | M5       | 0.55 | B7000 |
| F18823-77128 | WES2B TAP ADAPTOR DIA 6.0 X SQ 4.9 M6    | 6.0  | 4.9  | M6       | 0.55 | B7000 |
| F18823-77129 | WES2B TAP ADAPTOR DIA 6.0 X SQ 4.9 M8    | 6.0  | 4.9  | M8       | 0.55 | B7000 |
| F18823-77132 | WES2B TAP ADAPTOR DIA 6.2 X SQ 5.0 M7    | 6.2  | 5.0  | M7       | 0.55 | B7000 |
| F18823-77133 | WES2B TAP ADAPTOR DIA 6.2 X SQ 5.0 M8    | 6.2  | 5.0  | M8       | 0.55 | B7000 |
| F18823-77134 | WES2B TAP ADAPTOR DIA 6.3 X SQ 5.0 M6    | 6.3  | 5.0  | M6       | 0.55 | B7000 |
| F18823-77136 | WES2B TAP ADAPTOR DIA 7.0 X SQ 5.5 M9    | 7.0  | 5.5  | M9       | 0.55 | B7000 |
| F18823-77137 | WES2B TAP ADAPTOR DIA 7.0 X SQ 5.5 M10   | 7.0  | 5.5  | M10      | 0.55 | B7000 |
| F18823-77138 | WES2B TAP ADAPTOR DIA 7.1 X SQ 5.6 M7    | 7.1  | 5.6  | M7       | 0.55 | B7000 |
| F18823-77139 | WES2B TAP ADAPTOR DIA 8.0 X SQ 6.0 M11   | 8.0  | 6.0  | M11      | 0.55 | B7000 |
| F18823-77140 | WES2B TAP ADAPTOR DIA 8.0 X SQ 6.2 M11   | 8.0  | 6.2  | M11      | 0.55 | B7000 |
| F18823-77141 | WES2B TAP ADAPTOR DIA 8.0 X SQ 6.2 M8    | 8.0  | 6.2  | M8       | 0.55 | B7000 |
| F18823-77142 | WES2B TAP ADAPTOR DIA 8.0 X SQ 6.3 M8    | 8.0  | 6.3  | M8       | 0.55 | B7000 |
| F18823-77143 | WES2B TAP ADAPTOR DIA 8.0 X SQ 6.3 M10   | 8.0  | 6.3  | M10      | 0.55 | B7000 |
| F18823-77144 | WES2B TAP ADAPTOR DIA 8.5 X SQ 6.5 M12   | 8.5  | 6.5  | M12      | 0.55 | B7000 |
| F18823-77145 | WES2B TAP ADAPTOR DIA 9.0 X SQ 7.0 M12   | 9.0  | 7.0  | M12      | 0.55 | B7000 |
| F18823-77146 | WES2B TAP ADAPTOR DIA 9.0 X SQ 7.1 M12   | 9.0  | 7.1  | M12      | 0.55 | B7000 |
| F18823-77147 | WES2B TAP ADAPTOR DIA 10.0 X SQ 8.0 M10  | 10.0 | 8.0  | M10      | 0.50 | B7000 |
| F18823-77148 | WES2B TAP ADAPTOR DIA 10.5 X SQ 8.0 M14  | 10.5 | 8.0  | M14      | 0.50 | B7000 |
| F18823-77149 | WES2B TAP ADAPTOR DIA 10.5 X SQ 8.0 M15  | 10.5 | 8.0  | M15      | 0.50 | B7000 |
| F18823-77150 | WES2B TAP ADAPTOR DIA 11.0 X SQ 9.0 M14  | 11.0 | 9.0  | M14      | 0.50 | B7000 |
| F18823-77151 | WES2B TAP ADAPTOR DIA 11.2 X SQ 9.0 M14  | 11.2 | 9.0  | M14      | 0.50 | B7000 |
| F18823-77152 | WES2B TAP ADAPTOR DIA 12.0 X SQ 9.0 M16  | 12.0 | 9.0  | M16      | 0.50 | B7000 |
| F18823-77153 | WES2B TAP ADAPTOR DIA 12.5 X SQ 10.0 M16 | 12.5 | 10.0 | M16      | 0.50 | B7000 |
| F18823-77154 | WES2B TAP ADAPTOR DIA 13.0 X SQ 10.0 M17 | 13.0 | 10.0 | M17      | 0.50 | B7000 |
| F18823-77155 | WES2B TAP ADAPTOR DIA 14.0 X SQ 11.0 M18 | 14.0 | 11.0 | M18      | 0.48 | B7000 |
| F18823-77156 | WES2B TAP ADAPTOR DIA 14.0 X SQ 11.2 M18 | 14.0 | 11.2 | M18      | 0.48 | B7000 |
| F18823-77157 | WES2B TAP ADAPTOR DIA 14.0 X SQ 11.2 M20 | 14.0 | 11.2 | M20      | 0.48 | B7000 |
| F18823-77158 | WES2B TAP ADAPTOR DIA 15.0 X SQ 12.0 M20 | 15.0 | 12.0 | M20      | 0.48 | B7000 |
| F18823-77159 | WES2B TAP ADAPTOR DIA 16.0 X SQ 12.0 M20 | 16.0 | 12.0 | M20      | 0.48 | B7000 |
| F18823-77160 | WES2B TAP ADAPTOR DIA 16.0 X SQ 12.5 M22 | 16.0 | 12.5 | M22      | 0.45 | B7000 |
| F18823-77161 | WES2B TAP ADAPTOR DIA 17.0 X SQ 13.0 M22 | 17.0 | 13.0 | M22      | 0.45 | B7000 |
| F18823-77162 | WES2B TAP ADAPTOR DIA 18.0 X SQ 14.0 M24 | 18.0 | 14.0 | M24      | 0.45 | B7000 |
| F18823-77163 | WES2B TAP ADAPTOR DIA 18.0 X SQ 14.5 M22 | 18.0 | 14.5 | M22      | 0.45 | B7000 |
| F18823-77164 | WES2B TAP ADAPTOR DIA 18.0 X SQ 14.5 M24 | 18.0 | 14.5 | M24      | 0.45 | B7000 |
| F18823-77165 | WES2B TAP ADAPTOR DIA 19.0 X SQ 15.0 M24 | 19.0 | 15.0 | M24      | 0.45 | B7000 |

# TAPPING CHUCKS

## WE1B - Tap adaptor without clutch



| ADAPTOR RANGE | TAP RANGE | d  | d1 | d2 | l1 | l3 | l4   | l5 |
|---------------|-----------|----|----|----|----|----|------|----|
| FWE 1B        | M3-M12    | 30 | 19 | 19 | 17 | 4  | 21.5 | 7  |

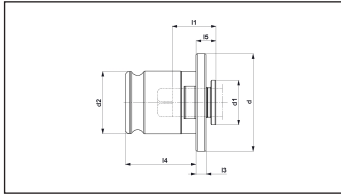
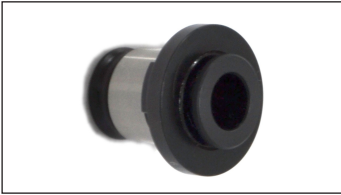
| Part No.     | Product name                       | DIA  | SQ   | Kgs  | Group |
|--------------|------------------------------------|------|------|------|-------|
| F18811-77101 | WE1B TAP ADAPTOR DIA 2.5 X SQ 2.1  | 2.5  | 2.1  | 0.07 | B7000 |
| F18811-77103 | WE1B TAP ADAPTOR DIA 2.8 X SQ 2.1  | 2.8  | 2.1  | 0.07 | B7000 |
| F18811-77105 | WE1B TAP ADAPTOR DIA 3.15 X SQ 2.5 | 3.15 | 2.5  | 0.07 | B7000 |
| F18811-77107 | WE1B TAP ADAPTOR DIA 3.5 X SQ 2.7  | 3.5  | 2.7  | 0.07 | B7000 |
| F18811-77109 | WE1B TAP ADAPTOR DIA 3.55 X SQ 2.8 | 3.55 | 2.8  | 0.07 | B7000 |
| F18811-77111 | WE1B TAP ADAPTOR DIA 4.0 X SQ 3.0  | 4.0  | 3.0  | 0.06 | B7000 |
| F18811-77114 | WE1B TAP ADAPTOR DIA 4.0 X SQ 3.15 | 4.0  | 3.15 | 0.06 | B7000 |
| F18811-77116 | WE1B TAP ADAPTOR DIA 4.0 X SQ 3.2  | 4.0  | 3.2  | 0.06 | B7000 |
| F18811-77117 | WE1B TAP ADAPTOR DIA 4.5 X SQ 3.4  | 4.5  | 3.4  | 0.06 | B7000 |
| F18811-77119 | WE1B TAP ADAPTOR DIA 4.5 X SQ 3.55 | 4.5  | 3.55 | 0.06 | B7000 |
| F18811-77120 | WE1B TAP ADAPTOR DIA 5.0 X SQ 4.0  | 5.0  | 4.0  | 0.06 | B7000 |
| F18811-77123 | WE1B TAP ADAPTOR DIA 5.5 X SQ 4.5  | 5.5  | 4.5  | 0.06 | B7000 |
| F18811-77125 | WE1B TAP ADAPTOR DIA 5.6 X SQ 4.5  | 5.6  | 4.5  | 0.06 | B7000 |
| F18811-77126 | WE1B TAP ADAPTOR DIA 6.0 X SQ 4.5  | 6.0  | 4.5  | 0.06 | B7000 |
| F18811-77127 | WE1B TAP ADAPTOR DIA 6.0 X SQ 4.9  | 6.0  | 4.9  | 0.06 | B7000 |
| F18811-77132 | WE1B TAP ADAPTOR DIA 6.2 X SQ 5.0  | 6.2  | 5.0  | 0.06 | B7000 |
| F18811-77134 | WE1B TAP ADAPTOR DIA 6.3 X SQ 5.0  | 6.3  | 5.0  | 0.06 | B7000 |
| F18811-77136 | WE1B TAP ADAPTOR DIA 7.0 X SQ 5.5  | 7.0  | 5.5  | 0.06 | B7000 |
| F18811-77138 | WE1B TAP ADAPTOR DIA 7.1 X SQ 5.6  | 7.1  | 5.6  | 0.06 | B7000 |
| F18811-77139 | WE1B TAP ADAPTOR DIA 8.0 X SQ 6.0  | 8.0  | 6.0  | 0.06 | B7000 |
| F18811-77140 | WE1B TAP ADAPTOR DIA 8.0 X SQ 6.2  | 8.0  | 6.2  | 0.06 | B7000 |
| F18811-77142 | WE1B TAP ADAPTOR DIA 8.0 X SQ 6.3  | 8.0  | 6.3  | 0.06 | B7000 |
| F18811-77144 | WE1B TAP ADAPTOR DIA 8.5 X SQ 6.5  | 8.5  | 6.5  | 0.06 | B7000 |
| F18811-77145 | WE1B TAP ADAPTOR DIA 9.0 X SQ 7.0  | 9.0  | 7.0  | 0.06 | B7000 |
| F18811-77146 | WE1B TAP ADAPTOR DIA 9.0 X SQ 7.1  | 9.0  | 7.1  | 0.06 | B7000 |
| F18811-77147 | WE1B TAP ADAPTOR DIA 10.0 X SQ 8.0 | 10.0 | 8.0  | 0.06 | B7000 |
| F18811-77148 | WE1B TAP ADAPTOR DIA 10.5 X SQ 8.0 | 10.5 | 8.0  | 0.06 | B7000 |
| F18811-77150 | WE1B TAP ADAPTOR DIA 11.0 X SQ 9.0 | 11.0 | 9.0  | 0.06 | B7000 |
| F18811-77151 | WE1B TAP ADAPTOR DIA 11.2 X SQ 9.0 | 11.2 | 9.0  | 0.06 | B7000 |

WE1B Quick Change Tap Adaptor Without Clutch

# TAPPING CHUCKS

Quick Change Tap Adaptor Without Clutch  
WE2B

## WE2B - Tap adaptor without clutch



| ADAPTOR TYPE | TAP RANGE | d  | d1 | d2 | l1 | l3 | l4 | l5 |
|--------------|-----------|----|----|----|----|----|----|----|
| FWE 2B       | M5-M20    | 48 | 30 | 31 | 30 | 5  | 35 | 11 |

| Part No.     | Product name                        | DIA  | SQ   | Kgs  | Group |
|--------------|-------------------------------------|------|------|------|-------|
| F18812-77127 | WE2B TAP ADAPTOR DIA 6.0 X SQ 4.9   | 6.0  | 4.9  | 0.25 | B7000 |
| F18812-77132 | WE2B TAP ADAPTOR DIA 6.2 X SQ 5.0   | 6.2  | 5.0  | 0.25 | B7000 |
| F18812-77134 | WE2B TAP ADAPTOR DIA 6.3 X SQ 5.0   | 6.3  | 5.0  | 0.25 | B7000 |
| F18812-77136 | WE2B TAP ADAPTOR DIA 7.0 X SQ 5.5   | 7.0  | 5.5  | 0.25 | B7000 |
| F18812-77138 | WE2B TAP ADAPTOR DIA 7.1 X SQ 5.6   | 7.1  | 5.6  | 0.25 | B7000 |
| F18812-77139 | WE2B TAP ADAPTOR DIA 8.0 X SQ 6.0   | 8.0  | 6.0  | 0.25 | B7000 |
| F18812-77140 | WE2B TAP ADAPTOR DIA 8.0 X SQ 6.2   | 8.0  | 6.2  | 0.25 | B7000 |
| F18812-77142 | WE2B TAP ADAPTOR DIA 8.0 X SQ 6.3   | 8.0  | 6.3  | 0.25 | B7000 |
| F18812-77144 | WE2B TAP ADAPTOR DIA 8.5 X SQ 6.5   | 8.5  | 6.5  | 0.25 | B7000 |
| F18812-77145 | WE2B TAP ADAPTOR DIA 9.0 X SQ 7.0   | 9.0  | 7.0  | 0.25 | B7000 |
| F18812-77146 | WE2B TAP ADAPTOR DIA 9.0 X SQ 7.1   | 9.0  | 7.1  | 0.25 | B7000 |
| F18812-77147 | WE2B TAP ADAPTOR DIA 10.0 X SQ 8.0  | 10.0 | 8.0  | 0.25 | B7000 |
| F18812-77148 | WE2B TAP ADAPTOR DIA 10.5 X SQ 8.0  | 10.5 | 8.0  | 0.25 | B7000 |
| F18812-77150 | WE2B TAP ADAPTOR DIA 11.0 X SQ 9.0  | 11.0 | 9.0  | 0.25 | B7000 |
| F18812-77151 | WE2B TAP ADAPTOR DIA 11.2 X SQ 9.0  | 11.2 | 9.0  | 0.25 | B7000 |
| F18812-77152 | WE2B TAP ADAPTOR DIA 12.0 X SQ 9.0  | 12.0 | 9.0  | 0.24 | B7000 |
| F18812-77153 | WE2B TAP ADAPTOR DIA 12.5 X SQ 10.0 | 12.5 | 10.0 | 0.24 | B7000 |
| F18812-77154 | WE2B TAP ADAPTOR DIA 13.0 X SQ 10.0 | 13.0 | 10.0 | 0.24 | B7000 |
| F18812-77155 | WE2B TAP ADAPTOR DIA 14.0 X SQ 11.0 | 14.0 | 11.0 | 0.24 | B7000 |
| F18812-77156 | WE2B TAP ADAPTOR DIA 14.0 X SQ 11.2 | 14.0 | 11.2 | 0.24 | B7000 |
| F18812-77158 | WE2B TAP ADAPTOR DIA 15.0 X SQ 12.0 | 15.0 | 12.0 | 0.24 | B7000 |
| F18812-77159 | WE2B TAP ADAPTOR DIA 16.0 X SQ 12.0 | 16.0 | 12.0 | 0.20 | B7000 |
| F18812-77160 | WE2B TAP ADAPTOR DIA 16.0 X SQ 12.5 | 16.0 | 12.5 | 0.20 | B7000 |
| F18812-77161 | WE2B TAP ADAPTOR DIA 17.0 X SQ 13.0 | 17.0 | 13.0 | 0.20 | B7000 |
| F18812-77162 | WE2B TAP ADAPTOR DIA 18.0 X SQ 14.0 | 18.0 | 14.0 | 0.20 | B7000 |
| F18812-77163 | WE2B TAP ADAPTOR DIA 18.0 X SQ 14.5 | 18.0 | 14.5 | 0.20 | B7000 |
| F18812-77165 | WE2B TAP ADAPTOR DIA 19.0 X SQ 15.0 | 19.0 | 15.0 | 0.20 | B7000 |

# TAPPING CHUCKS

## TAP SHANK DIMENSIONS TO - ISO / DIN / JIS

| Dimension Dia x Square | ISO 529     | DIN 352     | DIN 371   | DIN 374   | DIN 376   | JIS STANDARDS |
|------------------------|-------------|-------------|-----------|-----------|-----------|---------------|
| 2.8 X 2.1              | -           | -           | M1.8 & M2 | -         | -         | -             |
| 3.15 X 2.5             | M3 & M4     | -           | -         | -         | -         | -             |
| 3.5 X 2.7              | -           | M3          | M3        | M5        | M5        | -             |
| 3.55 X 2.8             | M3.5 & M4.5 | -           | -         | -         | -         | -             |
| 4 X 3                  | -           | M4          | M3.5      | -         | -         | M3 & M3.5     |
| 4 X 3.15               | M4 & M5     | -           | -         | -         | -         | -             |
| 4.5 X 3.4              | -           | M4          | M4        | M6        | M6        | -             |
| 4.5 X 3.55             | M6          | -           | -         | -         | -         | -             |
| 5 X 4                  | M5          | -           | -         | -         | -         | M4 & M4.5     |
| 5.5 X 4.5              | -           | -           | -         | -         | -         | M5            |
| 6 X 4.5                | -           | -           | -         | -         | -         | M5            |
| 6 X 4.9                | -           | M5, M6 & M8 | M5 & M6   | M8        | M8        | -             |
| 6.2 X 5                | -           | -           | -         | -         | -         | M7 & M8       |
| 6.3 X 5                | M6 & M8     | -           | -         | -         | -         | -             |
| 7 X 5.5                | -           | M10         | -         | M10       | M10       | M9 & M10      |
| 8 X 6.2                | -           | -           | M8        | -         | -         | M11           |
| 8 X 6.3                | M8 & M10    | -           | -         | -         | -         | -             |
| 8.5 X 6.5              | -           | -           | -         | -         | -         | M12           |
| 9 X 7                  | -           | M12         | -         | M12       | M12       | -             |
| 9 X 7.1                | M12         | -           | -         | -         | -         | -             |
| 10 X 8                 | M10         | -           | M10       | -         | -         | -             |
| 10.5 X 8               | -           | -           | -         | -         | -         | M14           |
| 11 X 9                 | -           | M14         | -         | M14       | M14       | -             |
| 11.2 X 9               | M14         | -           | -         | -         | -         | -             |
| 12 X 9                 | -           | M16         | -         | M16       | M16       | -             |
| 12.5 X 10              | M16         | -           | -         | -         | -         | M16           |
| 13 X 10                | -           | -           | -         | -         | -         | M17           |
| 14 X 11                | -           | M18         | -         | M18       | M18       | M18           |
| 14 X 11.2              | M18 & M20   | -           | -         | -         | -         | -             |
| 15 X 12                | -           | -           | -         | -         | -         | M20           |
| 16 X 12                | -           | M20         | -         | M20       | M20       | -             |
| 16 X 12.5              | M22         | -           | -         | -         | -         | -             |
| 17 X 13                | -           | -           | -         | -         | -         | M22           |
| 18 X 14                | M24         | -           | -         | -         | -         | -             |
| 18 X 14.5              | -           | M22 & M24   | -         | M22 & M24 | M22 & M24 | -             |
| 19 X 15                | -           | -           | -         | -         | -         | M24           |
| 20 X 15                | -           | -           | -         | -         | -         | M27           |
| 20 X 16                | M27 & M30   | M27         | -         | M27       | M27       | -             |
| 22 X 18                | -           | M30         | -         | M30       | M30       | -             |
| 22.4 X 18              | M33         | -           | -         | -         | -         | -             |
| 23 X 17                | -           | -           | -         | -         | -         | M30           |
| 25 X 20                | M36         | M33         | -         | M33       | M33       | -             |
| 28 X 22                | -           | M36         | -         | M36       | M36       | -             |
| 28 X 22.4              | M39 & M42   | -           | -         | -         | -         | -             |
| 31.5 X 25              | M45 & M48   | -           | -         | -         | -         | -             |
| 32 X 24                | -           | M39 & M42   | -         | M39 & M42 | M39 & M42 | -             |
| 36 X 29                | -           | M45 & M48   | -         | M45 & M48 | M45 & M48 | -             |

# SYNCHRO CHUCKS

\*Falcon synchro chucks compensate for the length error caused by the spindle backlash and achieve optimum performance from taps.

\*Minimum length compensation for rigid tapping with compression and expansion +/- 0.50mm.

\*Through coolant facility.

\*High concentricity allows high speed tapping.

\*Clamping with normal ER tap collets allows more range.

\*Reduction of pressure on the thread flanks increase tap life.

\*Better thread quality.

\*Compensation of the synchronization error (pitch & feed error).

\*These chucks are available in

\*BT(MAS 403)

\*SK(DIN69871)

\*HSK A(69893)

\*PARALLEL SHANKS (DIN1835 FORM-B & FORM-E)

\*Available in following range,

\*ER16 – M3 to M12

\*ER20 – M3 to M16

\*ER25 – M3 to M20

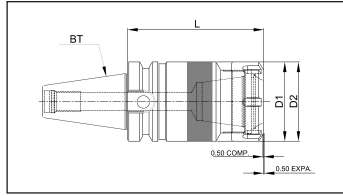
\*ER32 – M4 to M27

\*ER40 – M6 to M33

# SYNCHRO CHUCKS

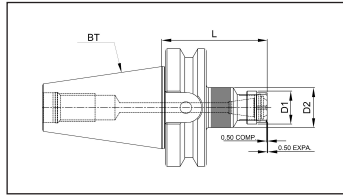
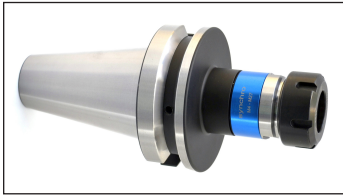
## BT (DIN ISO 7388-2) (MAS 403)

### BT40 - synchro chucks



| Part No.         | Product name                        | Taper | D1 | D2 | L   | Size | Clamping range | Tap Size | Compression | Expansion | Kgs  | Group |
|------------------|-------------------------------------|-------|----|----|-----|------|----------------|----------|-------------|-----------|------|-------|
| F1B409X-STC16079 | BT40 ADB SYNCHRO TAP.CHUCK ER16 079 | 40    | 28 | 34 | 79  | ER16 | 3.15 – 10      | M3 – M12 | 0.5         | 0.5       | 1.20 | B7000 |
| F1B409X-STC20085 | BT40 ADB SYNCHRO TAP.CHUCK ER20 085 | 40    | 35 | 34 | 85  | ER20 | 3.5 – 12       | M3 – M16 | 0.5         | 0.5       | 1.28 | B7000 |
| F1B409X-STC25089 | BT40 ADB SYNCHRO TAP.CHUCK ER25 089 | 40    | 42 | 34 | 89  | ER25 | 3.5 – 16       | M3 – M20 | 0.5         | 0.5       | 1.35 | B7000 |
| F1B409X-STC32110 | BT40 ADB SYNCHRO TAP.CHUCK ER32 110 | 40    | 50 | 45 | 110 | ER32 | 3.5 – 20       | M4 – M27 | 0.5         | 0.5       | 1.64 | B7000 |
| F1B409X-STC40115 | BT40 ADB SYNCHRO TAP.CHUCK ER40 115 | 40    | 63 | 62 | 115 | ER40 | 4.0 – 25       | M6 – M33 | 0.5         | 0.5       | 2.30 | B7000 |

### BT50 - Synchro chucks

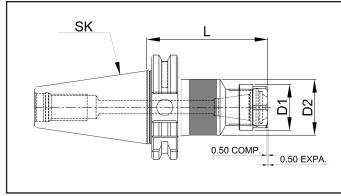
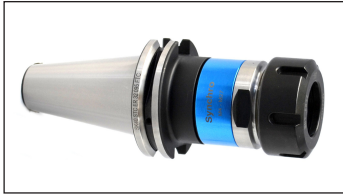


| Part No.         | Product name                        | Taper | D1 | D2 | L   | Size | Clamping range | Tap Size | Compression | Expansion | Kgs  | Group |
|------------------|-------------------------------------|-------|----|----|-----|------|----------------|----------|-------------|-----------|------|-------|
| F1B509X-STC16095 | BT50 ADB SYNCHRO TAP.CHUCK ER16 095 | 50    | 28 | 34 | 95  | ER16 | 3.15 – 10      | M3 – M12 | 0.5         | 0.5       | 3.79 | B7000 |
| F1B509X-STC20100 | BT50 ADB SYNCHRO TAP.CHUCK ER20 100 | 50    | 35 | 34 | 100 | ER20 | 3.5 – 12       | M3 – M16 | 0.5         | 0.5       | 3.87 | B7000 |
| F1B509X-STC25110 | BT50 ADB SYNCHRO TAP.CHUCK ER25 110 | 50    | 42 | 34 | 110 | ER25 | 3.5 – 16       | M3 – M20 | 0.5         | 0.5       | 3.95 | B7000 |
| F1B509X-STC32120 | BT50 ADB SYNCHRO TAP.CHUCK ER32 120 | 50    | 50 | 45 | 120 | ER32 | 3.5 – 20       | M4 – M27 | 0.5         | 0.5       | 4.16 | B7000 |
| F1B509X-STC40120 | BT50 ADB SYNCHRO TAP.CHUCK ER40 120 | 50    | 63 | 62 | 120 | ER40 | 4.0 – 25       | M6 – M33 | 0.5         | 0.5       | 4.89 | B7000 |

# SYNCHRO CHUCKS

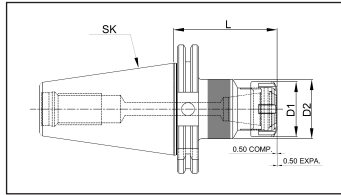
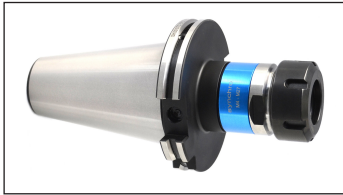
## SK (DIN ISO 7388-1) (DIN 69871)

### SK40 - Synchro chucks



| Part No.         | Product name                        | Taper | D1 | D2 | L   | Size | Clamping range | Tap Size | Compression | Expansion | Kgs  | Group |
|------------------|-------------------------------------|-------|----|----|-----|------|----------------|----------|-------------|-----------|------|-------|
| F1S409X-STC16079 | SK40 ADB SYNCHRO TAP.CHUCK ER16 079 | 40    | 28 | 34 | 79  | ER16 | 3.15 – 10      | M3 – M12 | 0.5         | 0.5       | 1.04 | B7000 |
| F1S409X-STC20080 | SK40 ADB SYNCHRO TAP.CHUCK ER20 080 | 40    | 35 | 34 | 80  | ER20 | 3.5 – 12       | M3 – M16 | 0.5         | 0.5       | 1.09 | B7000 |
| F1S409X-STC25084 | SK40 ADB SYNCHRO TAP.CHUCK ER25 084 | 40    | 42 | 34 | 84  | ER25 | 3.5 – 16       | M3 – M20 | 0.5         | 0.5       | 1.16 | B7000 |
| F1S409X-STC32095 | SK40 ADB SYNCHRO TAP.CHUCK ER32 095 | 40    | 50 | 45 | 95  | ER32 | 3.5 – 20       | M4 – M27 | 0.5         | 0.5       | 1.41 | B7000 |
| F1S409X-STC40120 | SK40 ADB SYNCHRO TAP.CHUCK ER40 120 | 40    | 63 | 62 | 120 | ER40 | 4.0 – 25       | M6 – M33 | 0.5         | 0.5       | 2.10 | B7000 |

### SK50 - Synchro chucks



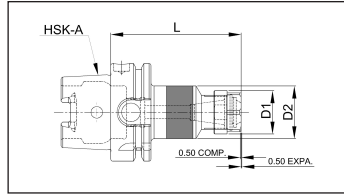
| Part No.         | Product name                        | Taper | D1 | D2 | L   | Size | Clamping range | Tap Size | Compression | Expansion | Kgs  | Group |
|------------------|-------------------------------------|-------|----|----|-----|------|----------------|----------|-------------|-----------|------|-------|
| F1S509X-STC16079 | SK50 ADB SYNCHRO TAP.CHUCK ER16 079 | 50    | 28 | 34 | 79  | ER16 | 3.15 – 10      | M3 – M12 | 0.5         | 0.5       | 2.83 | B7000 |
| F1S509X-STC20080 | SK50 ADB SYNCHRO TAP.CHUCK ER20 080 | 50    | 35 | 34 | 80  | ER20 | 3.5 – 12       | M3 – M16 | 0.5         | 0.5       | 2.91 | B7000 |
| F1S509X-STC25084 | SK50 ADB SYNCHRO TAP.CHUCK ER25 084 | 50    | 42 | 34 | 84  | ER25 | 3.5 – 16       | M3 – M20 | 0.5         | 0.5       | 3.01 | B7000 |
| F1S509X-STC32095 | SK50 ADB SYNCHRO TAP.CHUCK ER32 095 | 50    | 50 | 45 | 95  | ER32 | 3.5 – 20       | M4 – M27 | 0.5         | 0.5       | 3.41 | B7000 |
| F1S509X-STC40105 | SK50 ADB SYNCHRO TAP.CHUCK ER40 105 | 50    | 63 | 62 | 105 | ER40 | 4.0 – 25       | M6 – M33 | 0.5         | 0.5       | 3.93 | B7000 |



# SYNCHRO CHUCKS

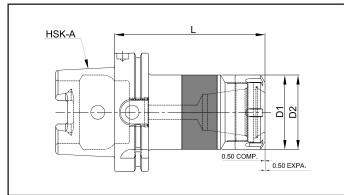
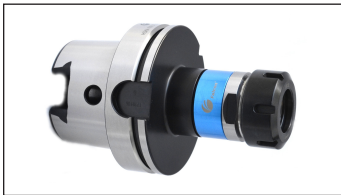
## HSK (DIN 69893)

### HSK A63 - Synchro chucks



| Part No.         | Product name                        | Taper | D1 | D2 | L     | Size | Clamping range | Tap Size | Compression | Expansion | Kgs  | Group |
|------------------|-------------------------------------|-------|----|----|-------|------|----------------|----------|-------------|-----------|------|-------|
| F1A063X-STC16089 | HSK A63 SYNCHRO TAP. CHUCK ER16 089 | A63   | 28 | 34 | 89    | ER16 | 3.15 – 10      | M3 – M12 | 0.5         | 0.5       | 0.85 | B7000 |
| F1A063X-STC20090 | HSK A63 SYNCHRO TAP. CHUCK ER20 090 | A63   | 35 | 34 | 90    | ER20 | 3.5 – 12       | M3 – M16 | 0.5         | 0.5       | 0.93 | B7000 |
| F1A063X-STC25094 | HSK A63 SYNCHRO TAP. CHUCK ER25 094 | A63   | 42 | 34 | 94    | ER25 | 3.5 – 16       | M3 – M20 | 0.5         | 0.5       | 1.00 | B7000 |
| F1A063X-STC32105 | HSK A63 SYNCHRO TAP. CHUCK ER32 105 | A63   | 50 | 45 | 105   | ER32 | 3.5 – 20       | M4 – M27 | 0.5         | 0.5       | 1.31 | B7000 |
| F1A063X-STC40133 | HSK A63 SYNCHRO TAP. CHUCK ER40 133 | A63   | 63 | 62 | 133.5 | ER40 | 4.0 – 25       | M6 – M33 | 0.5         | 0.5       | 1.95 | B7000 |

### HSK A100 - Synchro chucks

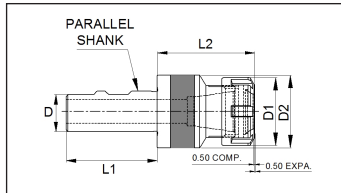


| Part No.         | Product name                         | Taper | D1 | D2 | L   | Size | Clamping range | Tap Size | Compression | Expansion | Kgs  | Group |
|------------------|--------------------------------------|-------|----|----|-----|------|----------------|----------|-------------|-----------|------|-------|
| F1A100X-STC16096 | HSK A100 SYNCHRO TAP. CHUCK ER16 096 | A100  | 28 | 34 | 96  | ER16 | 3.15 – 10      | M3 – M12 | 0.5         | 0.5       | 2.19 | B7000 |
| F1A100X-STC20097 | HSK A100 SYNCHRO TAP. CHUCK ER20 097 | A100  | 35 | 34 | 97  | ER20 | 3.5 – 12       | M3 – M16 | 0.5         | 0.5       | 2.27 | B7000 |
| F1A100X-STC25101 | HSK A100 SYNCHRO TAP. CHUCK ER25 101 | A100  | 42 | 34 | 101 | ER25 | 3.5 – 16       | M3 – M20 | 0.5         | 0.5       | 2.34 | B7000 |
| F1A100X-STC32110 | HSK A100 SYNCHRO TAP. CHUCK ER32 110 | A100  | 50 | 45 | 110 | ER32 | 3.5 – 20       | M4 – M27 | 0.5         | 0.5       | 2.67 | B7000 |
| F1A100X-STC40133 | HSK A100 SYNCHRO TAP. CHUCK ER40 133 | A100  | 63 | 62 | 133 | ER40 | 4.0 – 25       | M6 – M33 | 0.5         | 0.5       | 3.29 | B7000 |

# SYNCHRO CHUCKS

## PARALLEL SHANK (DIN1835 B+E)

### PARALLEL SHANK - Synchro chucks



STC Synchro Chucks

| Part No.         | Product name                     | D  | D1 | D2 | L1 | L2    | Size | Clamping range | Tap Size | Compression | Expansion | Kgs  | Group |
|------------------|----------------------------------|----|----|----|----|-------|------|----------------|----------|-------------|-----------|------|-------|
| F1PS20X-STC16058 | PS20 SYNCHRO TAP. CHUCK ER16 058 | 20 | 28 | 34 | 51 | 58    | ER16 | 3.15 – 10      | M3 – M12 | 0.5         | 0.5       | 0.31 | B7000 |
| F1PS25X-STC16060 | PS25 SYNCHRO TAP. CHUCK ER16 060 | 25 | 28 | 34 | 56 | 60    | ER16 | 3.15 – 10      | M3 – M12 | 0.5         | 0.5       | 0.41 | B7000 |
| F1PS25X-STC20061 | PS25 SYNCHRO TAP. CHUCK ER20 061 | 25 | 35 | 34 | 56 | 61    | ER20 | 3.5 – 12       | M3 – M16 | 0.5         | 0.5       | 0.49 | B7000 |
| F1PS25X-STC25065 | PS25 SYNCHRO TAP. CHUCK ER25 065 | 25 | 42 | 34 | 56 | 65    | ER25 | 3.5 – 16       | M3 – M20 | 0.5         | 0.5       | 0.55 | B7000 |
| F1PS25X-STC32087 | PS25 SYNCHRO TAP. CHUCK ER32 069 | 25 | 50 | 45 | 56 | 87    | ER32 | 3.5 – 20       | M4 – M27 | 0.5         | 0.5       | 0.71 | B7000 |
| F1PS32X-STC40108 | PS32 SYNCHRO TAP. CHUCK ER40 108 | 32 | 63 | 62 | 61 | 108.5 | ER40 | 4.0 – 25       | M6 – M33 | 0.5         | 0.5       | 0.69 | B7000 |



# ***Falcon Toolings***

SF. No. 205 / 1 & 2, Kalapatti, Coimbatore - 641 048, India

Ph : +91 (422) 266 6156 , +91 (422) 266 6322

Email : [sales@falcontoolings.com](mailto:sales@falcontoolings.com)

Web: [www.falcontoolings.com](http://www.falcontoolings.com)